



# TASMANIAN STATISTICAL INDICATORS

EMBARGO: 11:30AM (CANBERRA TIME) WEDNESDAY 8 SEP 1999

## C O N T E N T S

	<i>page</i>
NOTES . . . . .	2
MAIN FEATURES . . . . .	3
LIST OF TABLES . . . . .	7
 SUBJECT AREAS	
<b>1</b> Population and demography . . . . .	9
<b>2</b> Labour force . . . . .	10
<b>3</b> Wages and prices . . . . .	19
<b>4</b> Production . . . . .	23
<b>5</b> Primary industry . . . . .	24
<b>6</b> Building . . . . .	28
<b>7</b> Finance . . . . .	29
<b>8</b> Tourism . . . . .	30
<b>9</b> Transport . . . . .	32
<b>10</b> Retail trade . . . . .	32
<b>11</b> Overseas trade . . . . .	33
<b>12</b> Australia and State comparisons . . . . .	35
<b>13</b> Tasmanian Statistical Divisions comparisons . . . . .	36
 ADDITIONAL INFORMATION	
Map: Tasmanian Statistical Divisions . . . . .	37

- For more information about these and related statistics, contact Information Services on 03 6222 5800, or refer to the back cover of this publication.

## NOTES

FORTHCOMING ISSUES	<p><i>ISSUE</i></p> <p>October 1999</p> <p>November 1999</p> <p>December 1999</p>	<p><i>RELEASE DATE</i></p> <p>8 October</p> <p>8 November</p> <p>8 December</p>														
INTRODUCTION	<p>1 This publication contains latest figures for a comprehensive range of economic indicators. Statistics shown in this publication are the latest available at the date of preparation and may be subject to revision in subsequent issues. In a number of cases figures appearing in this publication are preliminary and are subject to revision in subsequent issues. Reference should therefore always be made to the latest issue or to the statistical publication on the specific subject.</p>															
SEASONAL ADJUSTMENT AND TREND ESTIMATION	<p>2 Seasonal adjustment is a means of removing the estimated effects of normal seasonal variation from the series so that the effects of other influences on the series can be more clearly recognised. Seasonal adjustment does not aim to remove the irregular or non-seasonal influences which may be present in any particular month. This means that month-to-month movements of the seasonally adjusted estimates may not be reliable indicators of trend behaviour.</p> <p>3 The smoothing of seasonally adjusted series reduces the impact of the irregular components of the seasonally adjusted series and creates trend estimates. These trend estimates are derived by applying a 13-term Henderson-weighted moving average to all months except the last six. The last six monthly trend estimates are obtained by applying surrogates of the Henderson average to the seasonally adjusted series. Trend series are used to measure the underlying behaviour of the series over time.</p> <p>4 While this smoothing technique enables estimates to be produced for the latest month, it does result in revisions to the most recent months as additional observations become available. Generally, subsequent revisions become smaller and after 3 months have a negligible impact on the series. Revisions also occur as a result of the annual review of seasonal factors.</p>															
ABBREVIATIONS AND SYMBOLS	<table border="0"> <tbody> <tr> <td style="padding-right: 20px;">n.a.</td> <td>not available</td> </tr> <tr> <td>n.p.</td> <td>not available for separate publication (but included in totals where applicable)</td> </tr> <tr> <td>n.y.a.</td> <td>not yet available</td> </tr> <tr> <td>..</td> <td>not applicable</td> </tr> <tr> <td>—</td> <td>nil or rounded to zero</td> </tr> <tr> <td>p</td> <td>preliminary—figure or series subject to revision</td> </tr> <tr> <td>r</td> <td>figure or series revised since previous issue</td> </tr> </tbody> </table>		n.a.	not available	n.p.	not available for separate publication (but included in totals where applicable)	n.y.a.	not yet available	..	not applicable	—	nil or rounded to zero	p	preliminary—figure or series subject to revision	r	figure or series revised since previous issue
n.a.	not available															
n.p.	not available for separate publication (but included in totals where applicable)															
n.y.a.	not yet available															
..	not applicable															
—	nil or rounded to zero															
p	preliminary—figure or series subject to revision															
r	figure or series revised since previous issue															

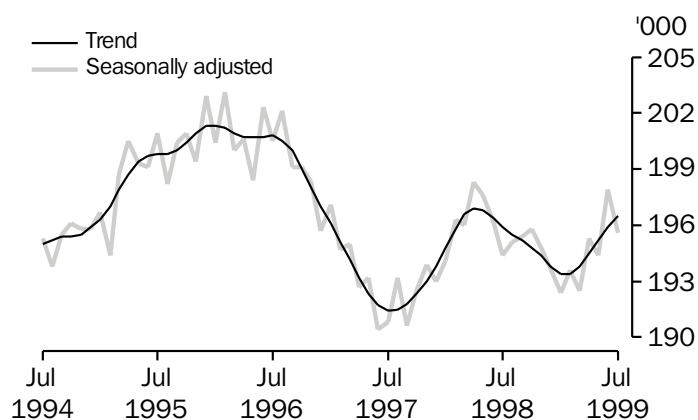
Vince Lazzaro  
Acting Regional Director, Tasmania

## MAIN FEATURES

### EMPLOYMENT

Trend estimates There was an increase of 0.3% in Tasmania's employment over the 12 months to July 1999. The largest percentage increase in employment was in South Australia (3.6%), followed by Queensland (2.7%), New South Wales (2.1%), Western Australia (1.2%) and Victoria (1.0%). (See table 39.)

#### EMPLOYMENT, TASMANIA



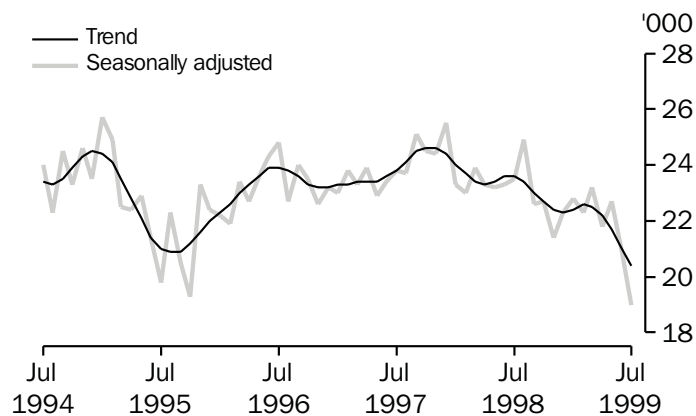
### THE LABOUR FORCE

Trend estimates There were an estimated 216,900 persons (based on *trend* estimates) in the labour force in July 1999 and an estimated 370,000 civilian Tasmanians aged 15 years or more, yielding a labour force participation rate of 58.6%. This compares with 59.4% in July 1998.

For males, the *trend* estimate of the participation rate was 68.9%, which is the same as the figure for July 1998. For females, the *trend* estimate of the participation rate was 48.9%, compared with 50.3% in July 1998. (See table 3.)

### UNEMPLOYMENT

#### UNEMPLOYMENT, TASMANIA



Trend estimates The *trend* estimate of the number of unemployed persons in Tasmania for July 1999 was 20,400. This compares with 23,600 for July 1998. The *trend* estimate of the unemployment rate of 9.4% in July 1999 compares with 10.7% in July 1998. (See table 3.)

## CONSUMER PRICE INDEX

The Consumer Price Index: All Groups index for Hobart rose by 0.3% in the June quarter of 1999, and by 0.4% for the four quarters ending June 1999. The weighted average of the eight capital cities increased by 0.4% for the June quarter, and 1.1% for the year ending June 1999. As suggested by the small rise for Hobart, none of the component groups increased greatly in either the June quarter, or for the year. Nationally, components contributing most to the increase for the June quarter were automotive fuel (up 5.2%) and overseas holiday travel and accommodation (up 7.3%). Offsetting falls were recorded in domestic holiday travel and accommodation (down 6.1%) and fresh vegetables (down 6.2%). For the year ending June, national rises were recorded in fresh fruit prices (up 24.8%), house purchase prices (up 4.0%) and private dwelling rents (up 2.6%).

## BUILDING MATERIALS PRICE INDEX

The price index for materials used in house building in Hobart decreased by 0.2% in the June quarter 1999, and by 0.1% in the four quarters ending June. Falls were also recorded in Melbourne and Brisbane over the year, with the weighted average of the six State capital cities coming to an increase of 0.2%. During the June quarter, structural timber prices decreased in all cities except Sydney and Hobart, which recorded price increases. Clay brick prices fell in Sydney, Melbourne, Brisbane and Hobart; while prices for insulation, switches and switch boards increased in all cities.

The price index for materials used in buildings other than house building for Hobart fell by 0.2% in the June quarter 1999, but increased by 0.2% in the year ending June. The weighted average of the six State capitals increased by 0.2% in the June quarter, and by 0.8% for the year.

Most of the capitals recorded small increases over the year, with Melbourne the highest at 1.7%. Perth was the only city to record a decrease, of 0.1%.

In Hobart, materials which contributed to the annual increase were clay bricks (up 1.1%), and paint and other coatings (up 1.4%). The greatest decreases were recorded in the prices of structural timber (down 2.8%), ready mixed concrete (down 1.7%), steel decking (down 3.5%), and builders hardware (down 2.4%).

## LIVESTOCK SLAUGHTERING

Trend estimates In June 1999, the trend estimate for Tasmania for the slaughtering of cattle and calves remained unchanged from the previous month. Over the same period, the number of sheep and lambs slaughtered fell by 1.1% and the number of pigs slaughtered rose by 3.3%.

In June 1999, the *trend* estimate of the number of cattle and calves slaughtered was 22,300 which was 7.9% less than the number slaughtered in June 1998 and 1.4% below the *trend* estimate for June 1997.

The *trend* estimate for the slaughtering of sheep and lambs was 70,000 in June 1999. This was slightly less than the number slaughtered in June 1998 but slightly above the *trend* estimate for June 1997.

The *trend* estimate of 7,500 pigs slaughtered in June 1999 was 7.4% more than the number slaughtered in June 1998 and 17.9% above the *trend* estimate for June 1997. (See table 21)

#### BUILDING APPROVALS

Original terms There were 88 dwelling units approved during June 1999 in Tasmania, with new houses accounting for 76 of this total. The number of dwelling units approved during June 1999 was 7.4% below the May 1999 figure of 95, and 17.8% below the June 1998 figure of 107. For the twelve months ended June 1999 there were 1,410 new dwelling units approved, 14.2% below the 1,643 units recorded for the twelve months ended June 1998.

At current prices, the value of new residential building approved in June 1999 was \$9.0 million and the value of private non-residential building approved in June 1999 was \$5.3 million. At current prices, the value of all building approved in June 1999 was \$19.7 million. (See table 27.)

#### HOUSING FINANCE

Trend estimates The *trend* estimate for the number of secured housing finance commitments entered into in Tasmania in June 1999 was 824 dwellings, lower than the previous month's 847, but higher than the June 1998 figure of 783.

The total value of commitments in June 1999 was \$69 million, lower than the previous month's \$71 million. The June 1999 figure was higher than the June 1998 figure when the total value of commitments was \$63 million.

Nationally, the total number of secured housing commitments entered into in June 1999 was 45,502, an increase from the previous month's figure of 44,682. The value of these commitments increased between May and June 1999 from \$5,803 million to \$5,919 million. (See table 28)

#### NEW MOTOR VEHICLE REGISTRATIONS

Original terms There were 1,129 new motor vehicles (excluding motorcycles) registered in Tasmania during June 1999. This was 1.4% above the 1,113 registered in May 1999 and 29.4% below the June 1998 figure of 1,600. (See table 34.)

#### RETAIL

Original terms In *original* terms, the estimate of retail turnover in Australia for June 1999 was \$11,556.4 million, 7.8% above the figure recorded in June 1998. In *original* terms, the estimate of retail turnover in Tasmania for May 1999 was \$259.5 million, 5.7% above the figure recorded in June 1998.

Trend estimates In *trend* terms, the estimate of retail turnover in Australia for June 1999 was \$12,243.2 million, 6.9% above the figure recorded in June 1998. In *trend* terms, the estimate of retail turnover in Tasmania for June 1999 was \$275.3 million, 4.6% above the figure recorded in June 1998. (See table 35.)

## OVERSEAS TRADE

Original Terms The total value of Tasmania's overseas exports for 1998-99 was \$2,014 million. This was a 6% reduction from the 1997-98 figure of \$2,136 million. Tasmania's exports contributed 2.3% to Australia's total exports.

The value of Tasmania's exports for the month of June 1999 was \$242 million, an increase of 73% over the figure for May 1999, but a decrease on the June 1998 figure of \$236 million. Australian exports for June totalled \$6,921 million, a decrease of 10% on the June 1998 figure of \$7,732 million.

Tasmania's major export destinations for 1998-99 were Japan (\$462.1m, or 22.9%), the USA (\$235.7m, or 11.7%) and Hong Kong (\$152.3m, or 7.6%). Major commodities exported for the year were wood and woodchips (\$296.5m), metallic ores and metal scrap (\$277.9m) and road vehicles and transport equipment (\$173.4m).

Major export destinations for Tasmania in the month of June 1999 were Japan (\$57.6m), USA (\$13.8m) and Taiwan (\$13.5m). Major commodity groups in June were road vehicles and transport equipment (\$70.7m), non ferrous metals (\$42.3m) and metallic ores and scrap (\$ 37.1m).

## LIST OF TABLES

	Page
<b>1</b> Population	9
<b>2</b> Births, deaths and marriages	9
<b>3</b> Labour force status	10
<b>4</b> Labour force status by region, males	11
<b>5</b> Labour force status by region, females	12
<b>6</b> Labour force status by region, persons	13
<b>7</b> Teenage labour market	14
<b>8</b> All employed persons by occupation	15
<b>9</b> Employed wage and salary earners, sector and industry	16
<b>10</b> Average hours worked	16
<b>11</b> Job vacancies	17
<b>12</b> Industrial disputes	17
<b>13</b> Average weekly earnings of employees	18
<b>14</b> Indexes of total hourly rates of pay	18
<b>15</b> Summary of annual movements in wages and prices	19
<b>16</b> House price index numbers, Hobart	19
<b>17</b> Consumer price index, Hobart and eight capital cities combined	20
<b>18</b> Price index of materials used in building other than house building, Hobart	21
<b>19</b> Production of selected commodities	23
<b>20</b> Livestock slaughtering: original	24
<b>21</b> Livestock slaughtering: seasonally adjusted and trend	24
<b>22</b> Meat production	25
<b>23</b> Principal mineral concentrates produced	25
<b>24</b> Sawmills and plywood mills, logs delivered and timber produced	26
<b>25</b> Chipping and grinding of wood	26
<b>26</b> Logs delivered for milling or chipping	27
<b>27</b> Building approvals	28
<b>28</b> Secured housing commitments	28
<b>29</b> Banking statistics	29
<b>30</b> Private new capital expenditure by type of asset	29

## LIST OF TABLES—continued

	Page
<b>31</b> Accommodation establishments	30
<b>32</b> National Parks, person entries	31
<b>33</b> Tracks in National Parks, walker registrations	31
<b>34</b> Registrations of new motor vehicles	32
<b>35</b> Turnover of retail establishments at current prices	32
<b>36</b> Value of overseas trade—Tasmania and Australia	33
<b>37</b> Merchandise exports by selected countries and country groups	33
<b>38</b> Merchandise exports by selected commodity groups	34
<b>39</b> Major Statistical Indicators—Australia and State comparisons	35
<b>40</b> Major Statistical Indicators—Tasmanian Statistical Divisions	36



# 1

## POPULATION: Original

Year or quarter	Estimated resident population at end of period	Natural increase <sup>1</sup>	Net estimated migration gain	Total population growth	Annual growth rate <sup>2</sup>
	'000	'000	'000	'000	%
<b>Year ended 30 June</b>					
1996	474.4	2.5	-2.2	0.8	0.16
1997	473.5	2.4	-3.4	-1.0	-0.20
1998 p	471.9	2.1	-3.7	-1.6	-0.34
<b>Quarter</b>					
<b>1996</b>					
December	474.2	0.7	-0.9	-0.3	0.02
<b>1997</b>					
March	474.1	0.6	-0.8	-0.2	-0.02
June	473.5	0.5	-1.1	-0.6	-0.20
September p	473.1	0.5	-0.8	-0.4	-0.30
December p	472.7	0.5	-1.0	-0.4	-0.33
<b>1998</b>					
March p	472.4	0.6	-0.8	-0.2	-0.35
June p	471.9	0.5	-1.1	-0.5	-0.34
September p	471.6	0.5	-0.8	-0.3	-0.33
December p	471.1	0.7	-1.2	-0.4	-0.33

<sup>1</sup> Excess of live births registered over deaths registered (based on usual State of residence).

<sup>2</sup> Percentage growth from same quarter in previous year.

(Source: Australian Demographic Statistics, ABS catalogue number 3101.0)

# 2

## BIRTHS, DEATHS AND MARRIAGES (BY STATE OF USUAL RESIDENCE): Original

Year or quarter	Births		Deaths		Infant mortality <sup>1</sup>		Marriages	
	No.	Rate <sup>2</sup>	No.	Rate <sup>3</sup>	Deaths	Rate <sup>4</sup>	No.	Rate <sup>5</sup>
<b>Year ended 31 December</b>								
1996	6 337	1.854	3 826	7.0	28	4.4	2 654	5.6
1997	5 941	1.768	3 777	6.8	38	6.4	2 672	5.6
1998 p	5 965	1.809	3 611	6.3	34	5.7	2 558	5.4
<b>Quarter</b>								
<b>1996</b>								
December	1 586	..	932	..	3	1.9	658	..
<b>1997</b>								
March	1 483	..	863	..	7	4.7	900	..
June	1 505	..	988	..	12	8.0	600	..
September	1 563	..	1 095	..	12	7.7	554	..
December	1 390	..	851	..	7	5.0	618	..
<b>1998</b>								
March p	1 496	..	906	..	5	3.3	800	..
June p	1 444	..	908	..	13	9.0	810	..
September p	1 541	..	1 029	..	9	5.8	290	..
December p	1 484	..	768	..	7	4.7	658	..

<sup>1</sup> Deaths of children under one year of age.

<sup>2</sup> Total fertility rate. The sum of age-specific fertility rates (live births at each age of mother per female population of that age). It represents the number of children a woman would bear during her lifetime if she experienced current age-specific fertility rates at each age of her reproductive life.

<sup>3</sup> Standardised death rate. The overall death rate, per 1,000 persons, that would have prevailed in a standard population if it had experienced at each age the death rates of the population being studied. The standard population used in these calculations is all persons in the 1991 Australian population.

<sup>4</sup> Rate per 1,000 live births.

<sup>5</sup> Crude marriage rate is the number of marriages registered during the calendar year, per 1,000 estimated resident population at 30 June of that year. (Source: Australian Demographic Statistics, ABS catalogue number 3101.0)

## 3

LABOUR FORCE STATUS<sup>1</sup>: **Seasonally adjusted and trend**

Month	Seasonally adjusted series <sup>2</sup>				Trend series <sup>2</sup>			
	Employed	Unemployed	Unemployment rate	Participation rate	Employed	Unemployed	Unemployment rate	Participation rate
	'000	'000	%	%	'000	'000	%	%
MALES								
<b>1998</b>								
July	107.3	15.6	12.7	68.1	109.1	15.2	12.2	68.9
August	108.7	15.9	12.8	69.1	108.8	15.0	12.1	68.7
September	108.4	14.8	12.0	68.3	108.6	14.7	11.9	68.4
October	109.3	14.5	11.7	68.6	108.5	14.4	11.7	68.1
November	109.2	13.3	10.8	67.9	108.3	14.2	11.6	67.9
December	108.6	13.0	10.7	67.4	107.9	14.2	11.6	67.7
<b>1999</b>								
January	106.4	15.1	12.4	67.4	107.6	14.5	11.8	67.6
February	106.6	15.4	12.6	67.6	107.5	14.7	12.0	67.8
March	107.3	15.4	12.6	68.1	108.0	14.8	12.0	68.0
April	109.5	13.9	11.3	68.4	108.7	14.6	11.8	68.3
May	109.4	14.7	11.9	68.9	109.5	14.2	11.4	68.6
June	111.3	13.3	10.7	69.2	110.2	13.7	11.1	68.8
July	110.4	12.6	10.3	68.2	110.9	13.2	10.6	68.9
FEMALES								
<b>1998</b>								
July	87.1	7.9	8.3	50.2	86.8	8.4	8.8	50.3
August	86.4	8.9	9.4	50.4	86.7	8.3	8.8	50.2
September	87.0	7.8	8.2	50.1	86.5	8.3	8.8	50.1
October	86.5	8.2	8.7	50.0	86.3	8.3	8.8	49.9
November	85.5	8.1	8.7	49.4	86.1	8.2	8.7	49.8
December	85.1	9.3	9.8	49.8	85.9	8.1	8.6	49.6
<b>1999</b>								
January	86.0	7.7	8.2	49.4	85.8	8.0	8.5	49.5
February	87.0	6.9	7.4	49.5	85.8	7.9	8.4	49.4
March	85.2	7.8	8.4	49.0	85.8	7.7	8.3	49.3
April	85.8	7.9	8.4	49.4	85.8	7.6	8.2	49.2
May	85.0	8.0	8.6	49.0	85.7	7.5	8.0	49.1
June	86.6	7.5	8.0	49.6	85.6	7.3	7.9	49.0
July	85.3	6.4	7.0	48.3	85.6	7.2	7.8	48.9
TOTAL								
<b>1998</b>								
July	194.4	23.5	10.8	58.9	195.9	23.6	10.7	59.4
August	195.1	24.9	11.3	59.5	195.5	23.4	10.7	59.2
September	195.4	22.6	10.4	59.0	195.2	23.0	10.6	59.0
October	195.8	22.7	10.4	59.1	194.8	22.7	10.4	58.8
November	194.8	21.4	9.9	58.5	194.4	22.4	10.3	58.6
December	193.7	22.3	10.3	58.4	193.8	22.3	10.3	58.4
<b>1999</b>								
January	192.4	22.8	10.6	58.2	193.4	22.4	10.4	58.3
February	193.6	22.3	10.3	58.4	193.4	22.6	10.5	58.4
March	192.5	23.2	10.8	58.3	193.8	22.5	10.4	58.5
April	195.3	21.8	10.0	58.7	194.5	22.2	10.2	58.6
May	194.4	22.7	10.5	58.7	195.2	21.7	10.0	58.6
June	197.9	20.9	9.5	59.1	195.9	21.0	9.7	58.6
July	195.6	19.0	8.9	58.0	196.5	20.4	9.4	58.6

<sup>1</sup> For explanation of terms and concepts, refer to *Labour Force, Australia*, ABS catalogue number 6203.0.

<sup>2</sup> Seasonal factors are reviewed annually to take account of each additional year's original data. The results of the review are used to compile revised seasonally adjusted and trend estimates each February. Trend estimates for the most recent months are also revised each month; see Notes on page 2.

(Source: *Labour Force Australia*, ABS catalogue number 6203.0)

# 4

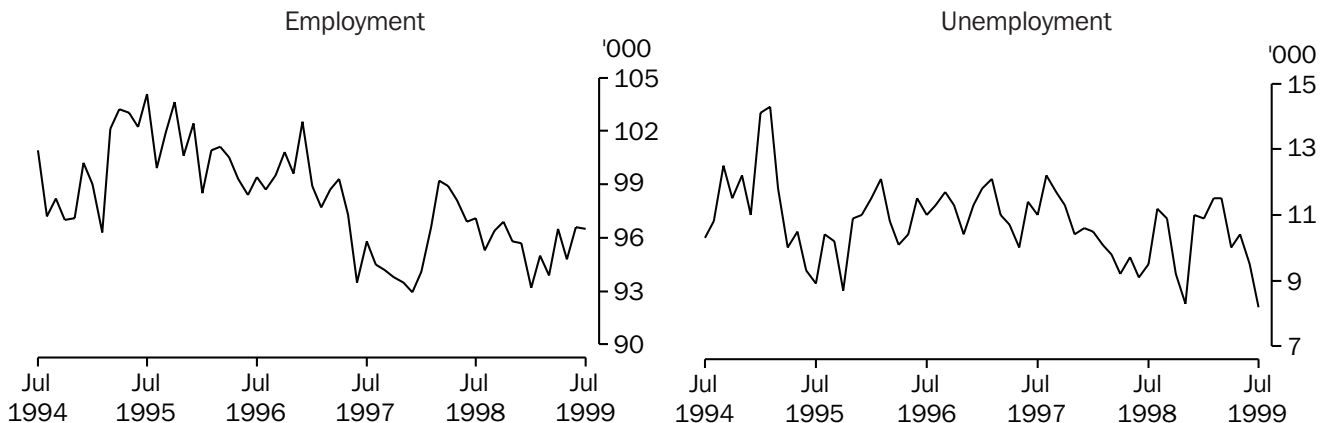
## LABOUR FORCE STATUS BY REGION, MALES<sup>1, 2</sup>: **Original**

	<i>Total employed</i>	<i>Total unemployed</i>	<i>Unemployment rate</i>	<i>Participation rate</i>
<i>Month</i>	'000	'000	%	%
HOBART AND SOUTHERN STATISTICAL DIVISIONS				
1996				
July	55.3	6.3	10.2	69.9
1998				
July	52.3	6.6	11.2	67.4
1999				
May	51.8	6.9	11.8	68.0
June	51.8	6.5	11.1	66.8
July	53.1	5.9	10.0	67.0
NORTHERN STATISTICAL DIVISION				
1996				
July	33.0	5.3	13.8	74.6
1998				
July	29.9	5.5	15.5	70.2
1999				
May	33.9	3.1	8.3	71.1
June	34.3	3.3	8.8	70.9
July	33.2	4.0	10.7	69.7
MERSEY-LYELL STATISTICAL DIVISION				
1996				
July	26.5	2.9	10.0	72.5
1998				
July	25.0	3.7	13.0	67.2
1999				
May	24.7	3.5	12.3	67.1
June	24.2	3.3	12.2	68.7
July	23.9	2.9	10.9	68.9
TASMANIA				
1996				
July	114.8	14.5	11.2	71.8
1998				
July	107.2	15.7	12.8	68.1
1999				
May	110.4	13.5	10.9	68.7
June	110.2	13.1	10.6	68.4
July	110.2	12.8	10.4	68.2

<sup>1</sup> For explanation of terms and concepts, refer to *Labour Force, Australia*, ABS catalogue number 6203.0.

<sup>2</sup> Data in this table are original series, i.e. they are not part of a seasonally adjusted or a trend series. Accordingly, care should be exercised when using these data. New monthly data from each quarter (March, June, September and December) are published two months after the quarter. (Source: Labour Force Estimates—microfiche tables.)

Hobart and Southern Statistical Divisions—Persons: **Original** (see Table 6.)



# 5

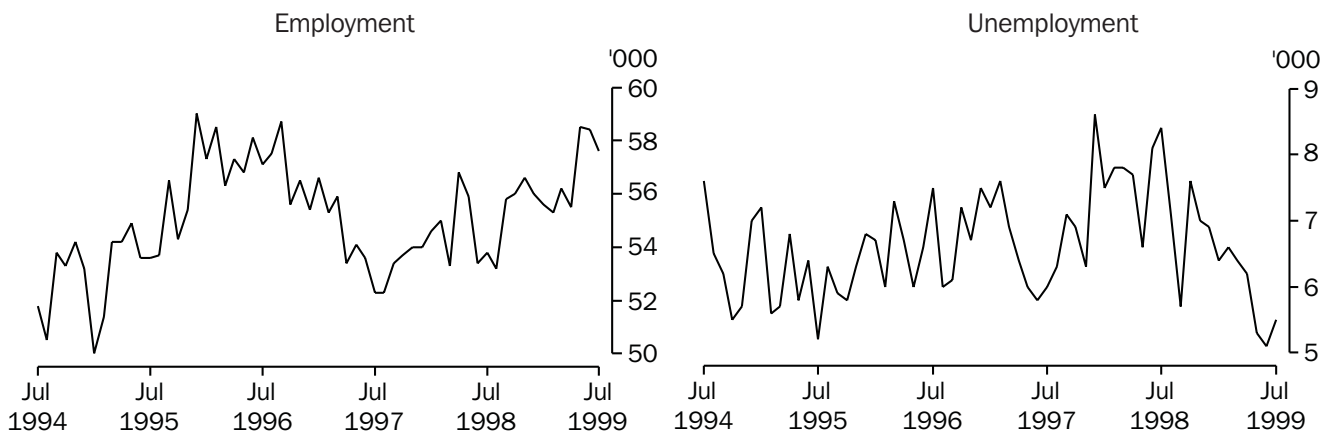
## LABOUR FORCE STATUS BY REGION, FEMALES<sup>1, 2</sup>: **Original**

	<i>Total employed</i>	<i>Total unemployed</i>	<i>Unemployment rate</i>	<i>Participation rate</i>
<i>Month</i>	'000	'000	%	%
HOBART AND SOUTHERN STATISTICAL DIVISIONS				
1996				
July	44.1	4.7	9.6	51.9
1998				
July	44.8	2.9	6.2	51.9
1999				
May	43.0	3.4	7.4	50.6
June	44.8	3.0	6.3	51.9
July	43.5	2.3	5.0	49.0
NORTHERN STATISTICAL DIVISION				
1996				
July	24.1	2.2	8.4	50.3
1998				
July	24.0	2.9	10.9	49.9
1999				
May	24.6	2.2	8.2	50.3
June	24.1	1.8	7.1	48.2
July	24.4	1.5	5.9	48.6
MERSEY-LYELL STATISTICAL DIVISION				
1996				
July	17.8	2.6	12.9	48.5
1998				
July	18.4	1.4	7.2	45.6
1999				
May	18.7	2.0	9.5	46.4
June	16.9	2.3	12.0	44.1
July	17.4	2.1	10.7	45.4
TASMANIA				
1996				
July	86.0	9.5	10.0	50.7
1998				
July	87.2	7.3	7.7	49.9
1999				
May	86.3	7.6	8.1	49.5
June	85.9	7.2	7.7	49.1
July	85.3	5.9	6.5	48.1

<sup>1</sup> For explanation of terms and concepts, refer to *Labour Force, Australia*, ABS catalogue number 6203.0.

<sup>2</sup> Data in this table are original series, i.e. they are not part of a seasonally adjusted or a trend series. Accordingly, care should be exercised when using these data. New monthly data from each quarter (March, June, September and December) are published two months after the quarter. (Source: Labour Force Estimates—microfiche tables.)

Northern Statistical Division—Persons: **Original** (see Table 6.)



# 6

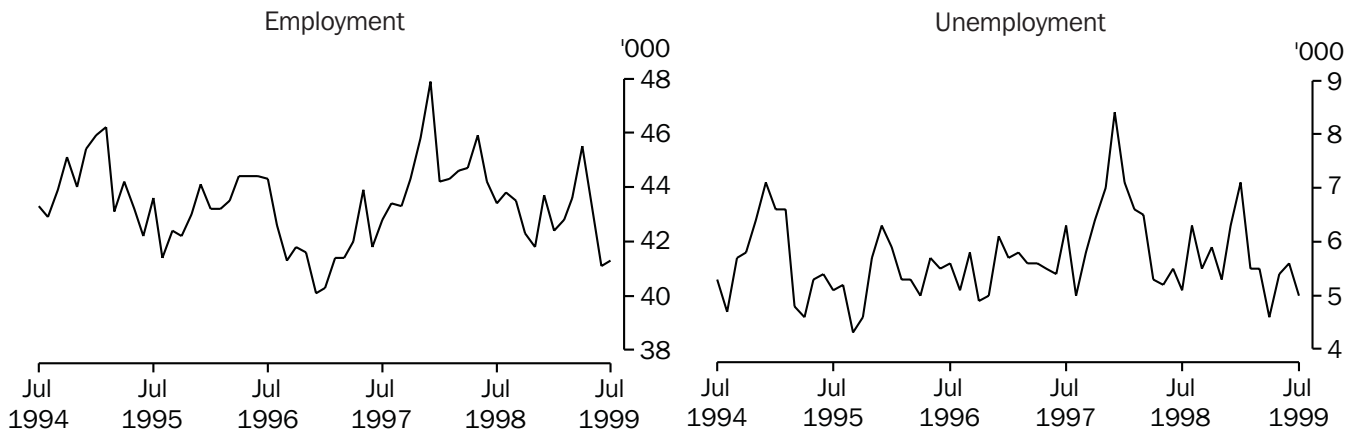
## LABOUR FORCE STATUS BY REGION, PERSONS<sup>1, 2</sup>: **Original**

	<i>Total employed</i>	<i>Total unemployed</i>	<i>Unemployment rate</i>	<i>Participation rate</i>
<i>Month</i>	'000	'000	%	%
HOBART AND SOUTHERN STATISTICAL DIVISIONS				
1996				
July	99.4	11.0	10.0	60.6
1998				
July	97.1	9.5	8.9	59.5
1999				
May	94.8	10.4	9.9	59.0
June	96.6	9.5	9.0	59.1
July	96.5	8.2	7.8	57.7
NORTHERN STATISTICAL DIVISION				
1996				
July	57.1	7.5	11.6	62.3
1998				
July	53.8	8.4	13.5	59.7
1999				
May	58.5	5.3	8.2	60.6
June	58.4	5.1	8.1	59.5
July	57.6	5.5	8.7	59.1
MERSEY-LYELL STATISTICAL DIVISION				
1996				
July	44.3	5.6	11.2	60.2
1998				
July	43.4	5.1	10.6	56.3
1999				
May	43.4	5.4	11.1	56.4
June	41.1	5.6	12.1	55.9
July	41.3	5.0	10.8	56.6
TASMANIA				
1996				
July	200.8	24.1	10.7	61.0
1998				
July	194.3	23.0	10.6	58.8
1999				
May	196.7	21.1	9.7	58.9
June	196.1	20.3	9.4	58.5
July	195.5	18.7	8.7	57.9

<sup>1</sup> For explanation of terms and concepts, refer to *Labour Force, Australia*, ABS catalogue number 6203.0.

<sup>2</sup> Data in this table are original series, i.e. they are not part of a seasonally adjusted or a trend series. Accordingly, care should be exercised when using these data. New monthly data from each quarter (March, June, September and December) are published two months after the quarter. (Source: Labour Force Estimates—microfiche tables.)

Mersey-Lyell Statistical Division—Persons: **Original** (see Table 6.)



## 7

TEENAGE LABOUR MARKET<sup>1, 2, 3</sup>: Original

Month	Employed		Unemployed		Labour force	Not in labour force	Civilian population aged 15–19	Unemployment rate	Unemployment population ratio	Participation rate
	Full-time	Total	Looking for full-time work	Total						
	'000	'000	'000	'000	'000	'000	'000	%	%	%
ATTENDING NEITHER SCHOOL NOR A TERTIARY INSTITUTION FULL TIME										
1996										
July	6.5	8.5	2.9	2.9	11.4	1.4	12.8	25.7	22.9	88.8
1998										
July	6.7	8.8	2.4	2.6	11.4	0.6	12.0	22.5	21.4	94.7
1999										
May	7.2	9.2	2.4	2.5	11.6	1.4	13.0	21.2	18.9	89.2
June	5.7	8.0	2.2	2.6	10.6	1.4	12.0	24.3	21.5	88.5
July	5.5	7.8	1.5	1.7	9.5	2.4	11.9	17.8	14.1	79.5
ATTENDING SCHOOL OR A TERTIARY INSTITUTION FULL TIME										
1996										
July	0.1	6.5	–	1.3	7.8	13.1	20.9	16.5	6.2	37.3
1998										
July	–	5.8	0.4	1.9	7.8	14.6	22.4	24.8	8.6	34.6
1999										
May	0.2	6.2	0.3	2.0	8.2	13.3	21.5	24.5	9.3	38.1
June	0.2	7.2	0.4	1.6	8.8	13.8	22.6	17.7	6.9	38.8
July	0.1	6.5	0.4	1.6	8.0	14.7	22.7	19.5	6.9	35.3
TOTAL										
1996										
July	6.6	15.0	2.9	4.2	19.2	14.6	33.8	22.0	12.5	56.9
1998										
July	6.7	14.6	2.8	4.5	19.1	15.3	34.4	23.5	13.0	55.6
1999										
May	7.4	15.3	2.7	4.5	19.8	14.7	34.5	22.6	13.0	57.4
June	6.0	15.2	2.6	4.1	19.4	15.2	34.6	21.3	11.9	56.0
July	5.6	14.2	1.9	3.2	17.5	17.1	34.6	18.6	9.4	50.5

<sup>1</sup> Persons aged 15–19 years.

<sup>2</sup> For explanation of terms and concepts, refer to *Labour Force, Australia*, ABS catalogue number 6203.0.

<sup>3</sup> Care should be exercised in using these series as some estimates are subject to high sampling variability.. (Source: Labour Force Estimates—unpublished data.)

## 8

ALL EMPLOYED PERSONS BY OCCUPATION<sup>1</sup>: Original

Occupation	May 1998	May 1999		Proportion of total employed		
	Persons	Males	Females	Persons	May 1998	May 1999
	'000	'000	'000	'000	%	%
<b>Managers and administrators</b>	<b>11.4</b>	<b>9.3</b>	<b>3.0</b>	<b>12.2</b>	<b>5.7</b>	<b>6.2</b>
Generalist managers	1.1	1.4	0.2	1.6	0.6	0.8
Specialist managers	3.9	2.6	1.0	3.6	2.0	1.8
Farmers and farm managers	6.3	5.3	1.8	7.1	3.2	3.6
<b>Professionals</b>	<b>31.0</b>	<b>15.5</b>	<b>15.0</b>	<b>30.5</b>	<b>15.5</b>	<b>15.5</b>
Science, building and engineering professionals	3.4	2.6	0.1	2.7	1.7	1.4
Business and information professionals	5.5	3.1	1.3	4.4	2.8	2.2
Health professionals	8.0	2.4	5.5	7.9	4.0	4.0
Education professionals	9.0	3.5	5.2	8.7	4.5	4.4
Social, arts and miscellaneous professionals	5.1	4.0	2.9	6.9	2.6	3.5
<b>Associate professionals</b>	<b>19.1</b>	<b>12.2</b>	<b>7.1</b>	<b>19.2</b>	<b>9.6</b>	<b>9.8</b>
Science, engineering and related associate professionals	2.1	2.4	0.4	2.8	1.1	1.4
Business and administration associate professionals	4.2	3.0	2.3	5.2	2.1	2.6
Managing supervisors (sales and service)	9.8	4.7	3.2	7.9	4.9	4.0
Other associate professionals	3.0	2.1	1.2	3.3	1.5	1.7
<b>Tradespersons and related workers</b>	<b>27.0</b>	<b>23.1</b>	<b>2.7</b>	<b>25.8</b>	<b>13.5</b>	<b>13.1</b>
Mechanical and fabrication engineering tradespersons	5.5	4.7	0.1	4.8	2.8	2.4
Automotive tradespersons	2.8	2.4	0.1	2.5	1.4	1.3
Electrical and electronics tradespersons	3.5	4.9	—	4.9	1.8	2.5
Construction Tradespersons	5.3	4.1	—	4.1	2.7	2.1
Other tradespersons and related workers	10.0	7.0	2.5	9.5	5.0	4.8
<b>Advanced clerical and service workers</b>	<b>4.1</b>	<b>1.2</b>	<b>3.4</b>	<b>4.7</b>	<b>2.1</b>	<b>2.4</b>
Secretaries and personal assistants	2.2	—	2.5	2.5	1.1	1.3
Other advanced clerical and service workers	1.9	1.2	0.9	2.1	1.0	1.1
<b>Intermediate clerical, sales and service workers</b>	<b>40.9</b>	<b>10.4</b>	<b>27.7</b>	<b>38.1</b>	<b>20.5</b>	<b>19.4</b>
Intermediate clerical workers	23.3	5.0	15.9	20.9	11.7	10.6
Intermediate sales and related workers	3.0	2.5	0.9	3.5	1.5	1.8
Intermediate service workers	14.6	2.9	10.8	13.7	7.3	7.0
<b>Intermediate production and transport workers</b>	<b>20.2</b>	<b>18.2</b>	<b>2.9</b>	<b>21.1</b>	<b>10.1</b>	<b>10.7</b>
Intermediate plant operators	6.2	5.6	—	5.6	3.1	2.8
Intermediate machine operators	2.3	1.3	1.1	2.4	1.2	1.2
Road and rail transport drivers	7.0	6.8	0.7	7.6	3.5	3.9
Other intermediate production and transport workers	4.7	4.4	1.1	5.6	2.4	2.8
<b>Elementary clerical, sales and service workers</b>	<b>23.3</b>	<b>6.3</b>	<b>13.2</b>	<b>19.5</b>	<b>11.7</b>	<b>9.9</b>
Elementary clerks	1.7	0.3	1.2	1.5	0.9	0.8
Elementary sales workers	19.0	5.6	11.2	16.8	9.5	8.5
Elementary service workers	2.6	0.4	0.8	1.2	1.3	0.6
<b>Labourers and related workers</b>	<b>22.8</b>	<b>14.3</b>	<b>11.2</b>	<b>25.5</b>	<b>11.4</b>	<b>13.0</b>
Cleaners	5.7	1.7	4.5	6.3	2.9	3.2
Factory labourers	6.9	4.4	2.1	6.5	3.5	3.3
Other labourers and related workers	10.1	8.2	4.5	12.8	5.1	6.5
<b>Total employed</b>	<b>199.8</b>	<b>110.4</b>	<b>86.3</b>	<b>196.7</b>	<b>100.0</b>	<b>100.0</b>

<sup>1</sup> For explanation of terms and concepts, refer to *Labour Force, Australia*, ABS catalogue number 6203.0. (Source: Labour Force Estimates—unpublished data.)

## 9

### EMPLOYED WAGE AND SALARY EARNERS, SECTOR AND INDUSTRY<sup>1</sup>: **Original**

Industry	Employees, February 1999			Percentage distribution	
	Private	Public	Private and public	February 1998	February 1999
	No. ('000)	No. ('000)			
Agriculture, forestry, & fishing	n.a.	0.6	0.6	0.4	0.4
Mining	1.3	—	1.3	1.0	0.8
Manufacturing	22.5	0.1	22.5	13.5	14.5
Electricity, gas & water, Construction	5.0	2.1	7.1	4.3	4.6
Wholesale & Retail trade	31.6	—	31.6	21.9	20.4
Accommodation, cafes & restaurants	10.4	—	10.4	7.0	6.7
Transport & storage	6.1	0.9	7.0	3.6	4.5
Communication services	0.3	2.0	2.3	1.5	1.5
Finance, insurance, Property & business services	14.3	0.8	15.2	10.5	9.8
Education	2.9	12.4	15.3	9.9	9.9
Government administration and defence	—	9.5	9.5	6.0	6.1
Health and community services	13.4	8.4	21.8	15.1	14.1
Cultural, recreational, Personal and other services	7.6	2.6	10.1	5.5	6.5
<b>Total all industries</b>	<b>115.3</b>	<b>39.5</b>	<b>154.8</b>	<b>100.0</b>	<b>100.0</b>

<sup>1</sup> For explanation of terms and concepts, refer to *Employed Wage and Salary Earners, Australia*, catalogue number 6248.0. (Source: *Employed Wage and Salary Earners*, ABS catalogue number 6248.0.)

## 10

### AVERAGE HOURS WORKED: **Original**

Month	Average weekly total hours worked, all employed persons <sup>1</sup>			Average weekly overtime hours <sup>2</sup>		Percentage of employees working overtime
	Males	Females	Persons	Per employee	Per employee working overtime	
<b>1998</b>						
February	37.8	26.1	32.8	0.7	6.7	9.8
May	39.1	27.5	34.1	0.7	7.1	10.1
August	38.3	27.0	33.4	0.7	6.2	10.7
November	38.1	27.1	33.3	0.8	6.8	11.4
<b>1999</b>						
February	36.7	25.6	31.8	0.8	6.8	12.5
May	38.8	28.0	34.0	0.7	6.0	12.0

<sup>1</sup> For explanation of terms and concepts, refer to *Labour Force, Australia*, ABS catalogue number 6203.0.  
<sup>2</sup> For explanation of terms and concepts, refer to *Job Vacancies and Overtime, Australia*, ABS catalogue number 6354.0. (Source: *Job Vacancies and Overtime, Australia*, ABS catalogue number 6354.0 and unpublished data.)



## 11 JOB VACANCIES<sup>1, 2</sup>: Original

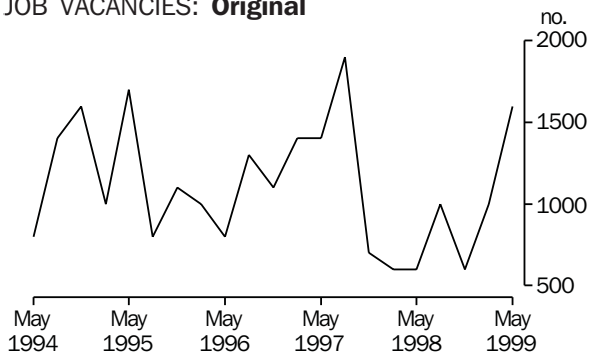
Period	Number '000	Rate <sup>3</sup> %
<b>1998</b>		
February	0.6	0.4
May	0.6	0.4
August	1.0	0.7
November	0.6	0.4
<b>1999</b>		
February	1.0	0.7
May	1.6	1.2

<sup>1</sup> For explanation of terms and concepts refer to *Job Vacancies and Overtime, Australia*, catalogue number 6354.0.

<sup>2</sup> Care should be exercised in using these series as some estimates are subject to high sampling variability.

<sup>3</sup> Job vacancies are expressed as a percentage of the number of job vacancies divided by the number of employees plus job vacancies.

### JOB VACANCIES: Original



## 12 INDUSTRIAL DISPUTES<sup>1</sup>: Original

Month	Working days lost '000	Twelve months ended	Working days lost per thousand employees no.
<b>1998</b>			
April	0.5	April	38
May	0.2	May	30
June	0.2	June	31
July	0.2	July	10
August	1.3	August	18
September	0.3	September	18
October	—	October	17
November	0.3	November	18
December	0.2	December	19
<b>1999</b>			
January	—	January	19
February	—	February	19
March	—	March	19
April	—	April	16
<b>Twelve months ended 1999</b>			
April	2.5		

<sup>1</sup> For explanation of terms and concepts, refer to *Industrial Disputes, Australia*, ABS catalogue number 6321.0.

# 13

## AVERAGE WEEKLY EARNINGS OF EMPLOYEES<sup>1</sup>: Original and trend

Survey reference period	Full-time adult males		All males	Full-time adult females		All females	Full-time adult persons		All employees
	Weekly ordinary time earnings	Weekly total earnings	Weekly total earnings	Weekly ordinary time earnings	Weekly total earnings	Weekly total earnings	Weekly ordinary time earnings	Weekly total earnings	Weekly total earnings
	\$	\$	\$	\$	\$	\$	\$	\$	\$
ORIGINAL									
<b>1998</b>									
February	739.30	776.30	669.20	602.40	615.40	400.10	692.80	721.70	534.10
May	727.60	778.60	667.20	605.20	615.20	400.40	686.60	723.90	533.60
August	732.50	769.30	652.20	613.40	626.20	418.90	692.00	720.60	536.10
November	738.50	783.70	672.90	621.30	637.00	407.70	699.30	734.70	537.00
<b>1999</b>									
February	747.40	803.10	696.30	619.90	632.20	422.50	705.10	746.40	560.50
May	731.90	771.20	657.80	613.70	625.30	421.00	692.00	722.00	539.60
TREND <sup>2</sup>									
<b>1998</b>									
February	733.30	772.20	661.50	599.60	610.50	400.00	687.70	717.30	530.10
May	733.80	774.90	663.60	608.10	620.50	405.60	691.30	722.70	534.10
August	735.00	780.30	668.40	615.70	628.90	410.90	695.20	729.60	538.90
November	737.40	784.50	673.10	617.90	631.20	414.40	697.50	733.30	542.80
<b>1999</b>									
February	739.10	785.60	673.50	617.00	630.00	417.80	697.80	733.30	545.30
May	739.00	782.60	669.40	615.00	627.30	421.90	696.30	729.80	546.70

<sup>1</sup> For explanation of terms and concepts, refer to *Average Weekly Earnings, States and Australia*, ABS catalogue number 6302.0.

<sup>2</sup> ABS Trend estimates for the most recent months are revised, see Notes on page 2.  
(Source: *Average Weekly Earnings, States and Australia*, ABS catalogue number 6302.0.)

# 14

## INDEXES OF TOTAL HOURLY RATES OF PAY (EXCLUDING BONUSES)<sup>1</sup>: Original (Base of each index: September Quarter 1997 = 100.0)

Industry <sup>2</sup> or occupation	Index numbers				% change		
	Jun Qtr 1998	Sept Qtr 1998	Dec Qtr 1998	Mar Qtr 1999	Jun Qtr 1998 to Sep Qtr 1998	Sep Qtr 1998 to Dec Qtr 1998	Dec Qtr '98 to Mar Qtr '99
SELECTED INDUSTRIES							
Manufacturing	102.0	102.3	102.5	104.7	0.3	0.2	2.1
Retail trade	100.9	102.2	103.1	103.7	1.3	0.9	0.6
Transport & storage	102.9	103.3	103.7	104.9	0.4	0.4	1.2
Finance & insurance	101.2	102.3	102.9	103.3	1.1	0.6	0.4
Government admin. & defence	101.0	101.2	102.1	102.7	0.2	0.9	0.6
Education	101.5	104.5	105.2	105.5	3.0	0.7	0.3
Health and community services	100.4	100.8	101.4	102.6	0.4	0.6	1.2
<b>All industries<sup>3</sup></b>	<b>101.4</b>	<b>102.4</b>	<b>102.9</b>	<b>103.9</b>	<b>1.0</b>	<b>0.5</b>	<b>1.0</b>
OCCUPATION							
Professionals	100.9	103.0	103.9	104.7	2.1	0.9	0.8
Associate professionals	102.2	103.0	103.4	104.3	0.8	0.4	0.9
Tradespersons & related workers	101.4	102.4	102.5	104.0	1.0	0.1	1.5
Intermediate clerical, sales & service workers	101.2	101.9	102.7	103.7	0.7	0.8	1.0
Intermediate production & transport workers	102.1	102.4	102.8	104.3	0.3	0.4	1.5
Elementary clerical, sales & service workers	103.1	103.3	103.8	105.0	0.2	0.5	1.2
Labourers & related workers	100.6	101.1	101.7	103.2	0.5	0.6	1.5
<b>All occupations</b>	<b>101.4</b>	<b>102.4</b>	<b>102.9</b>	<b>103.9</b>	<b>1.0</b>	<b>0.5</b>	<b>1.0</b>

<sup>1</sup> These indexes are a measure of quarterly changes in wage and salary costs for employee jobs. They were compiled for the first time for the December quarter 1997. They are one of four sets of indexes that together comprise the Wage Cost Index.

For explanation of terms and concepts, refer to *Wage Cost Index, Australia*, ABS catalogue number 6345.0.

<sup>2</sup> Industry is shown at the ANZSIC division level for selected divisions.

<sup>3</sup> Excludes Agriculture, Forestry and Fishing.

(Source: ABS unpublished data.)

# 15

## SUMMARY OF ANNUAL MOVEMENTS IN WAGES AND PRICES<sup>1</sup>: Original

Period	CPI. All groups Hobart	Price index of materials used in house building. All groups, Hobart <sup>2</sup>	Price index of materials used in building other than house building. All groups, Hobart <sup>2</sup>	Average weekly total earnings, full-time adult employees <sup>3</sup>
PERCENTAGE CHANGE FROM PREVIOUS YEAR				
1996-97	1.5	-0.5	1.0	4.6
1997-98	-0.1	0.7	0.9	5.1
1998-99	1.0	1.0	0.9	n.y.a.
<b>1997</b>				
June	0.6	-0.4	1.3	4.2
September	-0.4	-0.2	0.6	6.7
December	-0.1	0.7	0.9	4.6
<b>1998</b>				
March	-0.3	0.9	1.0	4.3
June	0.6	1.6	1.2	4.9
September	1.8	1.8	1.6	3.3
December	1.2	1.4	1.2	3.3
<b>1999</b>				
March	0.5	0.7	0.7	3.4
June	0.4	-0.1	0.2	-0.3

<sup>1</sup> Weekly award rates of pay collection has been discontinued from June 1997.

<sup>2</sup> Only quarterly data collected from June 1997. Earlier data has been re-compiled from monthly to quarterly.

<sup>3</sup> March, June, September and December data relates to February, May, August and November survey dates as published in 6302.0.

(Sources: Consumer Price Index, ABS catalogue number 6401.0; Price Index of Materials Used in House Building, ABS catalogue number 6408.0, (quarterly from June 1997); Price Index of Materials Used in Other than House Building, ABS catalogue number 6407.0, (quarterly from June 1997); Average Weekly Earnings, States and Australia, ABS catalogue number 6302.0)

# 16

## HOUSE PRICE INDEX NUMBERS<sup>1</sup>, HOBART: Original

(Base of each Index: 1989-90 = 100.0)

	Established house price index		Project home price index	
	Index	% change <sup>2</sup>	Index	% change <sup>2</sup>
1995-96	129.8	0.6	123.4	1.7
1996-97	128.5	-1.0	123.3	-0.1
1997-98	125.4	-2.4	123.3	—
<b>1997</b>				
March	130.4	1.5	123.3	—
June	124.9	-4.2	123.3	—
September	123.5	-1.1	123.3	—
December	123.9	0.3	123.3	—
<b>1998</b>				
March	129.5	4.5	123.3	—
June	124.8	-3.6	123.3	—
September	123.8	-0.8	123.3	—
December	121.7	-1.7	123.3	—
<b>1999</b>				
March	123.7	1.6	123.3	—

<sup>1</sup> Used in calculating the mortgage interest charges component of the Consumer Price Index.

<sup>2</sup> Percentage change over previous period.

(Source: House Price Indexes: Eight Capital Cities, ABS catalogue number 6416.0)

# 17

## CONSUMER PRICE INDEX, HOBART AND EIGHT CAPITAL CITIES COMBINED<sup>1,2</sup>; Original (Base of each index: year 1989–90 = 100.0)

Period	Hobart					
	Food	Clothing	Housing	Household equipment and operation	Transportation	Alcohol and tobacco
<b>1996</b>						
June	118.4	106.0	107.6	118.5	119.8	153.3
September	120.0	105.9	107.4	119.1	119.7	153.7
December	120.6	105.6	104.8	119.4	121.8	152.7
<b>1997</b>						
March	120.7	105.7	101.9	120.1	122.8	153.1
June	121.0	105.3	98.4	120.1	121.7	153.5
September	121.0	104.8	97.7	119.7	122.2	153.6
December	121.7	106.0	95.5	119.7	122.1	155.6
<b>1998</b>						
March	121.7	105.5	95.3	119.4	121.7	158.0
June	122.3	105.3	95.5	119.5	120.5	160.2
September	124.7	105.1	95.6	120.4	120.4	159.6
December	125.0	105.7	95.4	120.8	118.6	159.1
<b>1999</b>						
March	125.5	104.7	95.8	119.5	118.4	161.5
June	126.8	104.6	95.9	119.4	120.4	160.0

Period	Hobart				Weighted average of eight capital cities	
	Health and personal care	Recreation and education	Index, all groups	% change over previous period, all groups	Index	% change over previous period
<b>1996</b>						
June	150.5	116.0	120.6	0.4	119.8	0.7
September	154.1	115.1	121.1	0.4	120.1	0.3
December	154.8	116.8	121.3	0.2	120.3	0.2
<b>1997</b>						
March	159.4	120.5	121.9	0.5	120.5	0.2
June	162.6	119.2	121.3	-0.5	120.2	-0.2
September	153.0	119.2	120.6	-0.6	119.7	-0.4
December	160.9	120.6	121.2	0.5	120.0	0.3
<b>1998</b>						
March	162.7	121.7	121.5	0.2	120.3	0.3
June	166.1	122.6	122.0	0.4	121.0	0.6
September	171.5	122.5	122.8	0.7	121.3	0.2
December	169.5	124.2	122.7	-0.1	121.9	0.5
<b>1999</b>						
March	154.4	125.2	122.1	-0.5	121.8	-0.1
June	154.9	124.9	122.5	0.3	122.3	0.4

<sup>1</sup> Further information on construction of CPI indexes is contained in the bulletin *The Australian Consumer Price Index Concepts, Sources and Methods* (Catalogue No. 6461.0).

<sup>2</sup> The CPI is now published on a reference base of 1989–90 = 100.0.  
(Source: *Consumer Price Index*, ABS catalogue number 6401.0.)

# 18

## PRICE INDEX OF MATERIALS USED IN BUILDING OTHER THAN HOUSE BUILDING, HOBART<sup>1</sup>: **Original**

(Base year: 1989–90 = 100.0)

### *Index numbers for selected major building materials*

<i>Period</i>	<i>Structural timber</i>	<i>Clay bricks</i>	<i>Ready mixed concrete</i>	<i>Precast concrete products</i>	<i>Steel decking, cladding etc.</i>	<i>Structural steel</i>
1996–97	110.3	125.3	116.2	132.2	115.0	126.2
1997–98	108.9	129.0	118.0	131.5	117.8	127.2
1998–99	109.1	130.8	119.5	131.6	110.8	128.0
<b>1997</b>						
June	108.9	125.7	117.4	131.2	118.8	126.8
September	107.5	127.9	114.9	131.2	118.9	126.9
December	106.6	129.4	116.8	131.2	118.9	127.1
<b>1998</b>						
March	109.2	129.4	120.4	131.7	118.9	127.4
June	112.4	129.4	119.9	131.7	114.3	127.4
September	109.4	130.2	119.2	131.7	111.3	127.7
December	108.9	131.1	120.6	131.7	111.3	128.1
<b>1999</b>						
March	108.9	131.1	120.4	131.5	110.3	128.1
June	109.2	130.8	117.9	131.5	110.3	128.1

### *Index numbers for selected major building materials*

<i>Period</i>	<i>Reinforcing steel bar, fabric and mesh</i>	<i>Aluminium windows</i>	<i>Fabricated steel products</i>	<i>Builders' hardware</i>	<i>Sand &amp; aggregate</i>	<i>Paint &amp; other coatings</i>	<i>Non-ferrous pipes &amp; fittings</i>
1996–97	110.7	105.9	113.3	117.2	132.7	126.6	165.2
1997–98	112.7	107.2	114.7	113.7	124.5	127.3	164.3
1998–99	113.4	107.3	116.0	113.4	127.9	133.3	161.2
<b>1997</b>							
June	110.9	106.8	113.5	115.2	129.9	125.5	167.2
September	110.9	106.8	114.0	115.3	121.4	124.6	168.5
December	113.0	106.8	114.0	112.5	121.4	123.5	163.0
<b>1998</b>							
March	113.5	106.8	114.8	112.8	127.5	130.5	162.9
June	113.4	108.4	116.1	114.0	127.5	130.7	162.6
September	113.4	108.4	116.1	113.7	127.9	132.7	162.8
December	113.3	106.7	116.1	113.9	127.9	133.9	160.2
<b>1999</b>							
March	113.4	106.9	116.1	114.8	127.9	134.2	161.4
June	113.4	107.0	115.6	111.3	127.9	132.5	160.2

<sup>1</sup> Index numbers in this table have been recompiled to reflect the change to a quarterly collection basis from June 1997.  
(Source: *Price Index of Materials Used in Other than House Building*, ABS catalogue number 6407.0.)

*continued*

## 18

PRICE INDEX OF MATERIALS USED IN BUILDING OTHER THAN HOUSE BUILDING, HOBART<sup>1</sup>: **Original**—continued  
(Base year: 1989–90 = 100.0)

Period	<i>All electrical materials</i>		<i>All mechanical services</i>		<i>All plumbing materials</i>	
	Index	% change over previous period	Index	% change over previous period	Index	% change over previous period
1996–97	117.4	-1.0	117.0	1.7	122.8	-3.8
1997–98	117.2	-0.2	117.0	—	121.9	-0.7
1998–99	115.8	-1.2	119.0	1.7	124.5	2.1
<b>1997</b>						
June	117.5	-0.5	117.1	0.3	122.5	0.9
September	117.6	0.1	116.6	-0.4	122.8	0.2
December	117.8	0.2	116.8	0.2	122.0	-0.7
<b>1998</b>						
March	116.9	-0.8	117.4	0.5	121.6	-0.3
June	116.5	-0.3	117.1	-0.3	121.0	-0.5
September	116.1	-0.3	117.8	0.6	124.9	3.2
December	116.8	0.6	119.1	1.1	124.1	-0.6
<b>1999</b>						
March	115.2	-1.4	119.4	0.3	124.4	0.2
June	115.2	—	119.5	0.1	124.5	0.1

Period	<i>All groups excluding electrical materials and mechanical services</i>		<i>All groups</i>	
	Index	% change over previous period	Index	% change over previous period
1996–97	116.8	1.1	116.3	1.0
1997–98	118.0	1.0	117.4	0.9
1998–99	118.8	0.7	118.5	0.9
<b>1997</b>				
March	117.0	0.4	116.5	0.3
June	117.3	0.3	116.7	0.2
September	117.1	-0.2	116.5	-0.2
December	117.7	0.5	117.2	0.6
<b>1998</b>				
March	118.2	0.4	117.7	0.4
June	118.9	0.6	118.1	0.3
September	119.1	0.2	118.4	0.3
December	119.0	-0.1	118.6	0.2
<b>1999</b>				
March	118.8	-0.2	118.5	-0.1
June	118.4	-0.3	118.3	-0.2

<sup>1</sup> Index numbers in this table have been recomputed to reflect the change to a quarterly collection basis from June 1997.

(Source: *Price Index of Materials Used in Other than House Building*, ABS catalogue number 6407.0.)

## 19

PRODUCTION OF SELECTED COMMODITIES: **Original**

Year or month	Dairy products <sup>1</sup>			Staff-hours worked	
	Whole milk <sup>2</sup>	Factory butter <sup>3</sup>	Factory cheese	Textile manufacturing <sup>4</sup>	Vegetable preserving
	million litres	tonnes	tonnes	'000	'000
1996-97	529.4	10 869	25 398	1 349	1 534
1997-98	542.8	8 745	r 26 835	1 125	1 128
1998-99	603.4	11 546	29 946	1 061	1 084
<b>1998</b>					
June	16.0	392	1 399	95	101
July	12.4	296	628	104	94
August	23.3	511	424	82	93
September	58.1	937	2 849	98	75
October	81.0	1 157	4 084	105	83
November	81.8	1 414	4 379	94	103
December	77.2	1 565	4 088	83	103
<b>1999</b>					
January	66.1	1 068	3 398	42	51
February	50.5	940	2 675	90	86
March	54.0	r 985	r 2 907	96	96
April	44.3	r 992	r 2 351	82	90
May	35.1	1 180	978.	88	110
June	19.6	501	1 185	98	99
Year or month (quarterly for electricity)	Newsprint <sup>5</sup> '000 tonnes	Refined zinc '000 tonnes	Metal. refin. Index <sup>6</sup>	Electricity <sup>7</sup> million kW.h	
1996-97	232.7	207.7	116.1	9 543	
1997-98	n.p.	197.0	116.6	9 700	
1998-99	n.p.	214.3	125.0	9 910	
<b>1998</b>					
June	n.p.	17.7	121.0	(June qtr) 2 540	
July	n.p.	18.2	121.8	..	
August	n.p.	18.4	128.1	..	
September	n.p.	17.3	119.6	(Sept qtr) 2 660	
October	n.p.	18.1	126.3	..	
November	n.p.	16.2	123.5	..	
December	n.p.	17.3	116.0	(Dec qtr) 2 420	
<b>1999</b>					
January	n.p.	17.8	126.2	..	
February	n.p.	15.2	114.1	..	
March	n.p.	17.4	124.6	(Mar. qtr) 2 260	
April	n.p.	19.1	132.0	..	
May	n.p.	19.8	133.9	..	
June	n.p.	19.4	133.6	(June qtr) 2 570	

<sup>1</sup> Source: Australian Dairy Corporation.

<sup>2</sup> Includes the whole milk equivalent of farm cream intake.

<sup>3</sup> Includes butter equivalent of butter oil.

<sup>4</sup> Includes spinning, weaving and carpet making. Reported by establishments which manufacture textiles only, or manufacture clothing and textiles in the one plant.

<sup>5</sup> Excludes production of directory newsprint and high grade specialty paper.

<sup>6</sup> Metallurgical refining index (Base: 1979-80 = 100.0) Output from selected establishments covering the smelting and refining of ferro-alloys, zinc and aluminium. The weighting pattern is based on the establishments' value added as derived from the 1979-80 Manufacturing Census. For multi-product establishments, value added was apportioned to products on the basis of gross receipts from each product.

<sup>7</sup> Collected on a quarterly basis as from 1997.

(Source: ABS unpublished data.)

## 20

LIVESTOCK SLAUGHTERING: **Original**

Year or month	Cattle			Sheep	Lambs	Pigs
	Bulls, bullocks and steers	Cows and heifers	Calves			
	'000	'000	'000			
1996-97	110.2	93.4	43.6	384.4	364.0	74.9
1997-98	93.4	123.6	53.9	461.0	423.3	78.1
1998-99	92.4	117.1	61.1	409.3	474.3	81.0
<b>1997</b>						
June	7.5	10.3	0.9	31.0	29.9	5.9
<b>1998</b>						
June	7.8	12.3	1.0	24.5	42.3	8.4
July	8.4	10.4	2.3	21.7	37.9	8.5
August	6.7	5.3	18.7	13.6	33.2	5.9
September	5.7	8.2	26.0	16.6	42.5	6.8
October	7.0	7.2	7.4	19.2	31.4	6.2
November	6.9	8.6	1.0	38.1	30.1	5.3
December	8.3	12.1	0.3	51.2	40.6	8.0
<b>1999</b>						
January	7.5	9.9	0.1	49.8	44.6	4.7
February	8.1	10.9	0.2	55.7	43.7	5.1
March	7.3	9.9	0.5	41.2	45.4	8.4
April	8.9	11.2	1.9	33.3	44.0	6.8
May	9.3	11.1	1.6	r 30.5	r 39.2	6.4
June	8.3	12.3	1.1	38.5	41.6	8.8

(Source: ABS unpublished data.)

## 21

LIVESTOCK SLAUGHTERING: **Seasonally adjusted<sup>1</sup> and trend<sup>2</sup>**

Month	Seasonally adjusted			Trend		
	Cattle and calves	Sheep and lambs	Pigs	Cattle and calves	Sheep and lambs	Pigs
	'000	'000	'000	'000	'000	'000
<b>1997</b>						
June	21.0	60.9	5.5	22.6	69.6	6.3
<b>1998</b>						
June	22.7	65.5	8.2	24.2	70.2	6.9
July	25.3	66.8	7.2	24.3	71.4	7.2
August	24.8	79.8	6.5	24.2	72.7	7.2
September	25.2	85.9	7.4	23.8	73.8	6.9
October	22.1	63.4	6.6	23.1	74.9	6.5
November	20.7	71.8	5.9	22.4	75.5	6.2
December	23.1	78.1	6.5	21.8	75.4	6.1
<b>1999</b>						
January	20.8	73.0	5.0	21.6	74.9	6.1
February	22.3	84.4	5.8	21.8	74.2	6.3
March	20.4	71.5	8.2	22.0	73.2	6.6
April	24.2	65.9	6.8	22.2	71.9	6.9
May	21.9	65.0	6.0	22.3	70.7	7.2
June	22.1	77.8	8.3	22.3	70.0	7.5

<sup>1</sup> Seasonally adjusted factors are reviewed annually to take account of each additional year's original data. The results of the review are used to compile revised seasonally adjusted and trend estimates; see Notes page 2.

<sup>2</sup> ABS trend estimates for the most recent months are revised; see Notes page 2.

(Source: ABS unpublished data.)



## 22

### MEAT PRODUCTION<sup>1</sup>: Original

Year or month	Beef	Veal	Mutton	Lamb	Pigmeat <sup>2</sup>	Total
	tonnes	tonnes	tonnes	tonnes	tonnes	tonnes
1996-97	51 725	907	8 171	6 878	4 935	72 616
1997-98	53 061	1 148	9 840	8 072	4 915	77 036
1998-99	52 526	1 244	8 145	9 122	5 230	76 267
<b>1997</b>						
June	4 416	21	644	564	389	6 034
<b>1998</b>						
June	4 631	22	485	830	561	6 529
July	4 474	50	425	717	560	6 227
August	2 772	372	268	640	376	4 428
September	3 339	512	304	816	441	5 412
October	3 535	150	362	596	392	5 034
November	4 102	23	744	574	339	5 781
December	5 192	9	1 025	769	489	7 483
<b>1999</b>						
January	4 301	5	998	853	301	6 459
February	4 888	6	1 143	829	333	7 199
March	4 445	14	830	869	546	6 704
April	5 419	44	675	878	451	7 196
May	5 318	36	605	763	419	7 141
June	5 011	23	766	818	583	7 202

<sup>1</sup> Carcass weight.

<sup>2</sup> Includes pork used for production of bacon and ham.  
(Source: ABS unpublished data.)

## 23

### PRINCIPAL MINERAL CONCENTRATES PRODUCED: Original

Year or quarter	Copper	Iron (pellets)	Lead	Lead- zinc	Tin	Zinc
	'000 tonnes	'000 tonnes	'000 tonnes	'000 tonnes	'000 tonnes	'000 tonnes
1996-97	99.7	809.4	101.4	38.0	16.3	356.9
1997-98	109.6	1 074.7	84.6	26.2	16.2	335.4
1998-99 p	74.7	4 073.4	85.6	11.2	12.5	322.8
<b>1997</b>						
June	24.2	—	23.0	6.4	4.6	93.3
September	27.2	—	22.5	5.4	4.8	88.6
December	28.5	164.5	22.1	6.7	3.7	87.3
<b>1998</b>						
March	26.1	253.8	21.9	8.2	3.3	79.4
June	27.8	656.4	18.1	6.0	4.4	80.1
September	25.8	1 109.7	21.5	5.6	1.3	92.0
December	29.9	1 597.9	26.1	3.2	4.0	95.3
<b>1999</b>						
March p	11.0	481.2	29.5	2.5	3.7	97.1
June p	8.0	884.6	8.5	n.y.a.	3.6	38.5

(Source: Mineral Resources Tasmania, Department of Infrastructure, Energy and Resources.)

## 24

### SAWMILLS AND PLYWOOD MILLS, LOGS DELIVERED AND TIMBER PRODUCED: **Original**

Year or quarter	Tasmanian-grown logs delivered					Sawn, peeled and sliced timber produced <sup>1</sup>				
	Eucalypts	Hardwoods, excluding eucalypts <sup>2</sup>	Plantation <sup>3</sup> softwoods	Native softwoods <sup>4</sup>	Total	Eucalypts	Hardwoods, excluding eucalypts <sup>2</sup>	Plantation <sup>3</sup> softwoods	Native softwoods <sup>4</sup>	Total
		'000 m <sup>3</sup>	'000 m <sup>3</sup>	'000 m <sup>3</sup>			'000 m <sup>3</sup>	'000 m <sup>3</sup>	'000 m <sup>3</sup>	
1995-96	602.8	13.0	343.7	1.4	960.9	192.4	4.4	152.0	0.5	349.3
1996-97	500.8	17.0	352.9	1.2	871.9	165.8	4.3	158.0	0.5	328.5
1997-98	496.8	24.3	357.7	1.6	880.3	171.1	5.3	167.3	0.4	344.2
<b>1997</b>										
March	108.7	6.6	85.0	0.4	200.8	34.0	1.0	36.6	—	71.6
June	143.9	3.9	89.4	0.3	237.5	44.5	1.2	38.4	0.2	84.3
September	139.5	2.7	98.3	0.3	240.9	52.4	1.5	42.3	0.1	96.3
December	123.4	3.1	73.4	0.2	200.2	45.3	1.0	41.2	0.1	87.6
<b>1998</b>										
March	105.0	13.8	99.5	0.3	218.6	32.4	1.2	44.6	0.1	78.3
June	128.9	4.6	86.5	0.6	220.6	41.1	1.6	39.1	0.1	81.9
September	129.9	3.8	88.7	0.2	222.7	43.9	1.4	41.5	—	86.8
December	130.7	2.9	81.3	0.2	215.1	39.9	1.2	42.5	0.1	83.8
<b>1999</b>										
March	110.8	9.7	90.7	0.2	211.4	35.4	0.8	42.6	—	78.9

<sup>1</sup> Includes plywood, veneer and sliced timber production converted to an equivalent cubic measurement.

<sup>2</sup> Includes blackwood, myrtle, sassafras etc.

<sup>3</sup> Radiata pine.

<sup>4</sup> Includes Huon pine, celery top pine and King William pine.

(Source: ABS unpublished data.)

## 25

### CHIPPING AND GRINDING OF WOOD<sup>1</sup>: **Original**

Year or quarter	Producing locations <sup>2</sup>	Materials used <sup>3</sup>		
		Logs delivered <sup>4</sup>	Sawmill offcuts	Chipped and ground wood production
	no.	'000 m <sup>3</sup>	'000 m <sup>3</sup>	('000 tonnes green weight)
1995-96	31	3 510.0	457.9	3 820.1
1996-97	27	3 207.4	433.2	3 609.3
1997-98	28	3 998.1	457.9	4 440.1
<b>1997</b>				
March	28	759.7	87.0	829.2
June	27	875.1	95.2	1 000.9
September	27	936.1	106.8	1 064.1
December	28	999.2	113.6	1 100.1
<b>1998</b>				
March	28	1 014.7	116.6	1 157.7
June	28	1 048.0	120.9	1 118.3
September	29	872.5	87.3	981.5
December	29	798.3	112.0	889.5
<b>1999</b>				
March	29	862.9	r 79.2	r 997.7

<sup>1</sup> Both hardwoods and softwoods, separate details are not available.

<sup>2</sup> Capable of producing at end of year or actually producing during quarter.

<sup>3</sup> Data reported by weight, converted to cubic measure by the factor 0.95 m<sup>3</sup> per tonne.

<sup>4</sup> Includes log equivalent of limbwood and billets.

(Source: ABS unpublished data.)

# 26

## LOGS DELIVERED FOR MILLING OR CHIPPING: **Original**

Year or quarter	Sawmilling and plywood milling			Chipping and grinding <sup>1</sup>			Total		
	Crown land <sup>2</sup>	Private land	Total	Crown land <sup>2</sup>	Private land	Total	Crown land <sup>2</sup>	Private land	Total
	'000 m <sup>3</sup>	'000 m <sup>3</sup>	'000 m <sup>3</sup>	'000 m <sup>3</sup>	'000 m <sup>3</sup>	'000 m <sup>3</sup>	'000 m <sup>3</sup>	'000 m <sup>3</sup>	'000 m <sup>3</sup>
1995-96	773.5	187.4	960.9	1 579.6	1 930.4	3 510.0	2 353.1	2 117.8	4 470.9
1996-97	725.6	146.4	871.9	1 627.4	1 580.0	3 207.4	2 353.0	1 726.3	4 079.3
1997-98	750.7	129.6	880.3	1 894.9	2 103.1	3 998.1	2 645.7	2 232.7	4 878.3
<b>1997</b>									
March	170.3	30.5	200.8	375.7	383.9	759.7	546.0	414.5	960.5
June	198.5	39.1	237.5	437.2	437.9	875.1	635.7	477.0	1 112.6
September	201.0	39.8	240.9	464.9	471.2	936.1	665.9	511.0	1 177.0
December	166.6	33.6	200.2	485.0	514.3	999.2	651.5	547.9	1 199.4
<b>1998</b>									
March	191.9	26.7	218.6	466.6	548.1	1 014.7	658.5	574.9	1 233.3
June	191.2	29.4	220.6	478.5	569.5	1 048.0	669.7	598.9	1 268.6
September	188.3	34.3	222.7	341.0	531.5	872.5	529.4	565.8	1 095.2
December	183.4	31.7	215.1	422.4	375.9	798.3	605.8	407.6	1 013.4
<b>1999</b>									
March	184.1	27.3	211.4	367.0	495.8	862.9	551.1	523.2	1 074.3

<sup>1</sup> Logs used are generally below sawmilling standard; includes log equivalent of limbwood and billets.

<sup>2</sup> Comprises all areas (including concession areas) from which royalties are payable to Forestry Tasmania. (Source: ABS unpublished data.)

## 27 BUILDING APPROVALS: Original

Year or month	Dwelling units				Value				
	New houses	New other residential buildings <sup>1</sup>	Other dwell. units created (conversions etc.) <sup>2</sup>	Total dwelling units	New dwelling units	Alterations and additions to residential buildings <sup>3</sup>	Non-residential building <sup>4</sup>		Total of all building
no.	no.	no.	no.	\$'000	\$'000	Private	Total	\$'000	
1995-96	1 938	601	7	2 546	217 445	36 890	119 849	216 752	471 086
1996-97	1 593	251	17	1 861	157 428	35 323	121 490	158 970	351 720
1997-98	1 419	219	5	1 643	142 366	38 432	82 734	125 466	306 264
<b>1998</b>									
June	97	9	1	107	9 160	3 491	4 379	8 850	21 500
July	117	2	1	120	10 535	3 440	8 481	11 687	25 662
August	118	10	1	129	10 860	2 765	11 191	13 402	27 027
September	129	9	1	139	12 548	3 048	8 398	8 718	24 314
October	117	21	1	139	12 498	3 001	13 874	15 424	30 923
November	97	11	—	108	9 484	2 944	6 717	7 861	20 289
December	112	2	—	114	11 366	2 910	2 378	6 664	20 940
<b>1999</b>									
January	114	3	—	117	11 264	2 818	15 875	45 841	59 923
February	97	12	—	109	10 719	2 655	4 164	4 234	17 609
March	116	9	1	126	12 077	3 092	10 237	16 463	31 632
April	110	14	2	126	12 418	3 917	23 814	26 864	43 198
May	94	—	1	95	8 517	2 678	5 303	10 122	21 317
June	76	11	1	88	8 955	3 526	5 321	7 266	19 746

<sup>1</sup> New individual dwelling units (e.g. flats, home units and villa units).

<sup>2</sup> From alterations and additions to residential building, conversions of non-residential building to residential building etc.

<sup>3</sup> Valued at \$10,000 and over. Includes conversions and dwelling units approved as part of alterations and additions or as part of the construction of non-residential building.

<sup>4</sup> Comprises non-residential building (new plus alterations and additions) valued at \$50,000 and over.  
(Source: *Building Approvals, Tasmania*, ABS catalogue number 8731.6.)

## 28 SECURED HOUSING COMMITMENTS<sup>1</sup>: Original, seasonally adjusted and trend

Month	Total number of dwellings <sup>2</sup>			Total value of commitments <sup>3</sup>		
	Original	Seasonally adjusted	Trend	Original	Seasonally adjusted	Trend
no.	no.	no.	\$m	\$m	\$m	
<b>1998</b>						
June	892	855	783	74	75	63
July	771	757	761	65	64	63
August	769	765	747	65	64	62
September	686	690	751	58	55	63
October	719	704	775	57	58	64
November	824	847	814	71	71	68
December	873	893	859	74	76	72
<b>1999</b>						
January	751	933	892	63	76	75
February	870	892	902	74	75	76
March	1 027	908	891	92	78	76
April	854	848	871	71	76	74
May	915	877	847	76	72	71
June	813	770	824	62	62	69

<sup>1</sup> New seasonal adjustment factors resulting from the annual seasonal reanalysis were introduced in the January 1998 issue.

<sup>2</sup> Includes new dwellings, established dwellings and refinancing. Excludes alterations and additions.

<sup>3</sup> Commitment is a firm offer of housing finance. It either has been, or is normally expected to be, accepted. Includes commitments to provide housing finance to employees and commitments accepted and cancelled in the same month. Excludes alterations and additions. Includes refinancing.  
(Source: *Housing Finance for Owner Occupation, Australia*, ABS catalogue 5609.0.)

Month	Deposits				
	Current bearing interest	Current – not bearing interest	Fixed	Investment savings accounts	Statement savings accounts
	\$m	\$m	\$m	\$m	\$m
<b>1998</b>					
June	715	239	1 789	633	232
July	724	241	1 879	642	238
August	737	258	1 907	644	245
September	797	245	1 919	650	249
October	776	232	1 947	653	253
November	780	238	1 864	651	252
December	773	249	1 877	653	253
<b>1999</b>					
January	796	248	1 878	655	255
February	805	245	1 904	655	257
March	814	260	1 926	649	266
April	801	258	1 928	638	269
May	784	255	1 921	627	270
June	773	267	1 925	624	272

Month	Deposits			
	Passbook/School savings accounts	Other	Total	Loans <sup>2</sup>
	\$m	\$m	\$m	\$m
<b>1998</b>				
June	97	92	3 796	4 811
July	97	87	3 906	4 859
August	97	87	3 974	4 866
September	95	86	4 041	4 917
October	95	85	4 041	4 858
November	96	86	3 967	4 916
December	77	88	3 969	4 907
<b>1999</b>				
January	89	88	4 008	4 879
February	88	88	4 048	4 960
March	80	89	4 084	5 018
April	87	92	4 073	5 029
May	93	92	4 042	5 080
June	92	92	4 044	5 107

<sup>1</sup> Details are the averages of weekly figures for each month. The figures are derived from returns submitted by banks authorised under the *Banking Act* together with similar returns voluntarily submitted by the State banks; they exclude the Reserve Bank.

<sup>2</sup> Excludes non-resident loans.  
(Source: Reserve Bank of Australia.)

Year or quarter	Buildings and structures	Equipment, plant, and machinery	Total
	\$m	\$m	\$m
	1996–97	128	559
1997–98	169	477	646
<b>1998</b>			
March	31	110	141
June	42	102	145
September	39	103	142
December	25	70	95
<b>1999</b>			
March	30	86	116

<sup>1</sup> Estimates based on a sample survey and therefore subject to sampling variability. Covers selected industries only—mining, manufacturing, finance, property and other selected industries.

<sup>2</sup> Data revised back to June quarter 1987. See *Improvements to ABS Economic Statistics* (catalogue number 1357.0).  
(Source: *State Estimates of Private New Capital Expenditure*, ABS catalogue number 5646.0.)

Period	Establish- ments no.	Guest rooms no.	Bed spaces no.	Persons employed no.	Room nights occupied '000	Room occup- ancy rate %	Guest nights '000	Bed occup- ancy rate %	Guest arrivals '000	Takings from accomm- odation \$'000
<b>LICENSED HOTELS WITH FACILITIES</b>										
<b>1998</b>										
March qtr	55	2 930	8 000	2 870	173.4	65.8	294.0	40.8	161.6	14 849
<b>1999</b>										
Jan	n.a.	n.a.	n.a.	n.a.	52.9	58.9	94.7	38.5	52.5	4 476
Feb	n.a.	n.a.	n.a.	n.a.	56.8	70.0	88.4	39.8	51.8	4 801
March	n.a.	n.a.	n.a.	n.a.	59.1	65.8	91.6	37.2	54.8	4 938
March qtr	54	2 898	7 935	2 848	168.8	64.7	274.7	38.5	159.0	14 215
<b>MOTELS AND GUEST HOUSES WITH FACILITIES</b>										
<b>1998</b>										
March qtr	52	1 743	5 372	753	108.9	69.4	210.5	43.5	122.4	8 515
<b>1999</b>										
Jan	n.a.	n.a.	n.a.	n.a.	33.1	61.1	70.7	42.0	39.9	2 784
Feb	n.a.	n.a.	n.a.	n.a.	33.0	67.3	61.4	40.4	34.8	2 664
March	n.a.	n.a.	n.a.	n.a.	38.0	70.0	72.8	43.2	43.4	2 959
March qtr	51	1 749	5 431	714	104.1	66.1	204.9	41.9	118.1	8 408
<b>SERVICED APARTMENTS</b>										
<b>1998</b>										
March qtr	23	848	3 231	395	52.0	68.1	117.0	40.2	59.1	5 335
<b>1999</b>										
Jan	n.a.	n.a.	n.a.	n.a.	18.7	69.7	48.6	47.2	22.9	2 025
Feb	n.a.	n.a.	n.a.	n.a.	17.6	72.6	37.5	40.4	19.2	1 804
March	n.a.	n.a.	n.a.	n.a.	18.6	69.4	38.1	37.0	19.4	1 900
March qtr	24	865	3 321	428	54.9	70.5	124.2	41.6	61.5	5 728
<b>TOTAL ESTABLISHMENTS</b>										
<b>1998</b>										
March qtr	130	5 521	16 603	4 018	334.3	67.3	621.4	41.6	343.1	28 699
<b>1999</b>										
Jan	n.a.	n.a.	n.a.	n.a.	104.8	61.3	214.0	41.4	115.2	9 285
Feb	n.a.	n.a.	n.a.	n.a.	107.3	69.5	187.3	40.1	105.7	9 269
March	n.a.	n.a.	n.a.	n.a.	115.7	67.7	202.5	39.2	117.6	9 797
March qtr	129	5 512	16 687	3 990	327.8	66.1	603.9	40.2	338.6	28 351

<sup>1</sup> Comprising establishments with 15 or more rooms or units. Note: The Survey of Tourist Accommodation has been substantially revised from the March quarter 1998. Information in respect of 1998 has been retabulated on the basis of the new scope; 1998 data will, therefore, differ from previously published data. For an explanation, including definitions, refer to *Tourist Accommodation*, ABS catalogue number 8635.0. (Source: *Tourist Accommodation Australia*, ABS catalogue number 8635.0. For more detailed information, see also *Tourist Accommodation, Small Area Data, Tasmania*, ABS product number 8635.6.40.001)

## 32

NATIONAL PARKS, PERSON ENTRIES<sup>1</sup>: Original

## Tasmanian National Park attendance

Month	Cradle Mountain <sup>2</sup> (Lake Dove)	Lake St Clair <sup>2</sup> (Cynthia Bay)	Freycinet <sup>2</sup>	Mt Field <sup>2</sup>	Asbestos Range <sup>3</sup> (Bakers Beach)	Mole Creek Karst <sup>4</sup> (Marakooopa Cave)	Maria Island <sup>5</sup> (Darlington)
	no.	no.	no.	no.	no.	no.	no.
<b>1998</b>							
June	9 600	2 300	9 100	4 700	1 200	1 323	634
July	8 000	2 100	8 000	5 000	1 000	936	193
August	8 000	2 600	8 000	6 000	1 300	874	346
September	r 12 000	4 900	13 400	6 800	1 800	1 925	606
October	13 000	7 600	17 100	8 800	2 300	2 124	1 206
November	r 14 000	9 300	19 900	9 800	2 700	2 508	1 176
December	r 21 000	11 200	28 500	14 800	3 500	4 017	1 317
<b>1999</b>							
January	r 32 000	20 400	48 000	29 500	6 200	4 780	2 660
February	r 21 000	14 100	31 900	16 500	3 400	2 330	1 305
March	r 20 000	14 400	27 700	16 800	2 900	2 801	1 603
April	19 000	10 900	25 700	14 600	2 700	2 560	1 465
May	9 000	4 700	14 200	6 500	1 500	1 656	751
June	8 000	3 000	11 900	5 000	1 400	1 530	556

<sup>1</sup> A 'person entry' occurs whenever a visitor enters a National Park. Measurement occurs at the designated sites in brackets.

<sup>2</sup> Estimated through a combination of traffic and booth counts.

<sup>3</sup> Estimated through traffic counts.

<sup>4</sup> Number of people taken on a guided tour.

<sup>5</sup> The sum of ferry arrivals and estimated plane passengers.

(Source: Tasmanian Parks and Wildlife Service, Department of Primary Industries, Water and Environment.)

## 33

TRACKS IN NATIONAL PARKS, WALKER REGISTRATIONS<sup>1</sup>: Original

Month <sup>2</sup>	Overland <sup>3</sup>	South Coast <sup>4</sup>	Freycinet <sup>5</sup>	Port Davey <sup>4</sup>	Frenchmans Cap
	no.	no.	no.	no.	no.
<b>1998</b>					
June	r 93	5	42	3	10
July	r 41	—	101	—	6
August	r 43	6	64	—	7
September	r 128	4	93	2	6
October	r 190	r 15	326	10	36
November	r 644	r 63	193	r 17	24
December	r 1 295	r 212	348	r 54	92
<b>1999</b>					
January	r 1 408	r 323	454	r 74	176
February	r 1 125	r 206	243	r 49	87
March	r 942	r 85	226	r 12	59
April	748	92	182	p 10	99
May	111	6	57	—	30
June	69	3	97	p 1	18

<sup>1</sup> Numbers include only walkers who registered and represents their intention.

<sup>2</sup> Month of departure.

<sup>3</sup> Sum of registrations at Cradle Mt and Lake St Clair.

<sup>4</sup> Sum of registrations to walk the length of the track in any direction, irrespective of starting point.

<sup>5</sup> All overnight walkers registered in the park.

(Source: Tasmanian Parks and Wildlife Service, Department of Primary Industries, Water and Environment.)

## 34 REGISTRATIONS OF NEW MOTOR VEHICLES<sup>1</sup>: Original

Year or month	Passenger vehicles	Other vehicles <sup>2</sup>	Total (excl. motor cycles)	Vehicles registered by vehicle rental businesses <sup>3</sup>	Motor cycles
	no.	no.	no.	no.	no.
1996	11 445	2 728	14 173	2 384	472
1997	12 512	2 606	15 118	2 458	518
1998	12 857	2 848	15 705	1 830	567
<b>1998</b>					
June	1 275	325	1 600	82	32
July	1 216	281	1 497	42	43
August	1 112	239	1 351	215	37
September	1 280	216	1 496	408	44
October	1 015	218	1 233	134	56
November	1 101	223	1 324	194	68
December	1 556	217	1 773	712	63
<b>1999</b>					
January	777	199	976	5	56
February	741	187	928	23	48
March	985	242	1 227	20	45
April	879	219	1 098	—	45
May	838	275	1 113	2	35
June	859	270	1 129	n.y.a.	28

<sup>1</sup> Includes State and Commonwealth Government-owned motor vehicles other than those belonging to the defence services. Excludes tractors, plant and equipment, caravans and trailers.

<sup>2</sup> Comprises utilities, panel vans, rigid and articulated trucks and other truck-type vehicles (i.e. motor vehicles designed for purposes other than freight carrying, e.g. campervans, tow trucks, ambulances and hearses) and buses.

<sup>3</sup> These figures are included in previous columns.

(Source: *Motor Vehicle Registrations Australia*, ABS catalogue number 9301.0. ABS unpublished data.)

## 35 TURNOVER OF RETAIL ESTABLISHMENTS AT CURRENT PRICES: Original and trend

Period	Original \$m	Trend estimates <sup>1</sup>	
		\$m	Change from corresponding month of previous year %
<b>1998</b>			
June	245.5	263.1	-0.5
July	256.7	263.6	-1.3
August	246.0	264.0	-2.2
September	252.8	264.4	-2.7
October	269.1	265.2	-2.7
November	272.0	266.9	-1.8
December	348.4	269.5	-0.2
<b>1999</b>			
January	270.5	272.4	1.8
February	251.5	274.7	3.5
March	277.4	276.0	4.6
April	269.6	276.3	5.1
May	264.1	275.9	5.0
June	259.5	275.3	4.6

<sup>1</sup> Trend estimates for the most recent months have been revised. See Notes on page 2.  
(Source: *Retail Trade, Australia*, ABS Catalogue number 8501.0)



## 36

VALUE OF OVERSEAS TRADE<sup>1</sup>, TASMANIA AND AUSTRALIA: **Original**

Period	Tasmania				Australia				
	Imports	Imports: change over preceding period		Exports	Exports: change over preceding period		Imports: change over preceding period	Exports <sup>2</sup>	Change over preceding period
		\$'m	%		\$'m	%			
1996-97	396	13	1 708	5	78 998	2	78 932	4	
1997-98	385	-3	2 136	25	90 684	15	87 769	11	
1998-99	407	6	2 014	-6	97 616	8	86 000	-2	
<b>1998</b>									
June	30	28	236	-6	8 466	11	7 732	-3	
July	40	34	153	-35	8 905	5	7 471	-3	
August	33	-17	130	-15	8 145	-9	7 748	4	
September	48	44	146	12	8 544	5	7 601	-2	
October	44	-7	158	8	9 002	5	r 7 811	3	
November	35	-21	150	-5	8 535	-5	7 288	-7	
December	31	-11	172	15	7 820	-8	r 7 896	8	
<b>1999</b>									
January	32	2	135	-22	7 231	-8	r 6 302	-20	
February	30	-6	r 139	3	r 7 112	-2	r 6 240	-1	
March	33	11	254	82	8 700	22	r 7 326	17	
April	29	-13	195	-23	r 7 731	-11	r 6 422	-12	
May	29	-2	140	-28	r 7 750	0	6 973	9	
June	23	-22	242	73	8 142	5	6 921	-1	

<sup>1</sup> It is difficult to get a complete picture of Tasmania's trade performance as imports recorded by the ABS include only goods imported directly into the State from overseas, and reported by the Australian Customs Service. Many of Tasmania's goods imported for direct consumption, or input into further processing industries, arrive via interstate ports, and are not included in this table.

<sup>2</sup> Includes re-exports.

## 37

MERCHANDISE EXPORTS, by selected countries and country groups: **Original**

Period	European Community			East Asia			Hong Kong	ASEAN <sup>1</sup>	Total all countries
	United States of America	United Kingdom	Total European Community	Japan	Korea	Taiwan			
	\$'000	\$'000	\$'000	\$'000	\$'000	\$'000			
1996-97	117 245	166 308	299 844	467 855	64 135	93 951	100 881	364 586	1 708 322
1997-98	176 175	25 063	338 791	549 048	67 801	150 405	132 551	399 472	2 136 171
1998-99	235 738	28 094	276 108	462 092	101 015	149 866	152 281	353 177	2 013 686
<b>1998</b>									
June	19 631	1 963	88 611	48 294	7 168	7 587	8 567	21 923	235 872
July	16 095	3 106	12 893	39 306	2 697	16 509	12 241	36 046	153 470
August	11 252	1 413	7 383	r 28 878	7 748	13 113	13 206	29 109	129 852
September	26 195	797	9 845	26 704	4 171	13 518	14 307	27 355	145 896
October	8 842	776	9 258	47 311	9 542	r 12 900	11 503	39 620	157 588
November	30 044	2 284	10 477	30 573	10 115	9 734	11 037	24 382	149 731
December	24 835	765	12 761	55 933	14 878	9 615	9 098	22 047	171 707
<b>1999</b>									
January	6 028	3 834	9 673	36 522	4 900	15 231	13 337	32 803	134 706
February	13 874	3 491	14 356	33 144	10 930	10 973	12 835	r 23 056	r 139 316
March	37 059	3 704	r 85 993	41 016	8 109	11 682	11 872	r 38 697	r 254 069
April	r 31 625	r 3 504	r 17 877	r 31 952	9 870	r 10 190	r 15 591	r 27 163	r 195 150
May	r 16 130	r 2 521	r 9 121	r 33 163	r 5 106	r 12 858	r 14 322	r 22 632	r 140 160
June	13 761	1 898	76 471	57 589	12 948	13 543	12 933	30 268	242 035

<sup>1</sup> ASEAN member countries are: Brunei, Indonesia, Laos, Malaysia, Myanmar, Philippines, Singapore, Thailand and Viet Nam.

## 38 MERCHANDISE EXPORTS, by selected commodity groups: **Original**

Period	Meat and meat preparations	Dairy products	Fish, crustaceans and molluscs	Vegetables and fruit	Wood and woodchips	Textile fibres and wastes	Metallic ores and metal scrap
	\$'000	\$'000	\$'000	\$'000	\$'000	\$'000	\$'000
1996-97	55 604	110 108	121 996	36 541	241 388	38 762	184 100
1997-98	71 918	133 675	141 205	55 242	311 359	29 641	254 054
1998-99	64 713	97 314	135 859	54 660	296 527	24 955	277 900
<b>1998</b>							
June	6 393	11 675	5 018	4 306	25 722	1 481	35 102
July	4 772	4 875	15 622	4 446	24 972	2 555	16 813
August	4 872	5 001	17 970	3 638	18 561	1 486	18 557
September	3 291	5 608	12 952	1 652	12 479	1 593	12 573
October	3 852	8 119	7 915	1 095	25 095	2 406	33 704
November	4 563	9 968	7 096	177	28 936	1 908	24 505
December	6 415	11 394	12 110	219	30 445	4 494	37 028
<b>1999</b>							
January	6 764	9 156	12 860	654	20 394	1 026	22 666
February	6 027	7 395	10 290	4 646	r 24 055	1 413	r 13 053
March	5 034	10 687	7 613	r 9 368	r 31 147	4 989	r 24 901
April	5 229	9 197	13 251	r 13 519	r 24 101	1 938	20 509
May	r 6 223	r 7 744	r 9 516	r 10 890	r 22 783	475	16 469
June	7 672	8 169	8 661	4 356	33 557	671	37 123
Period	Medical and pharmaceutical products	Paper and paperboard	Iron and steel	Non-ferrous metals	Road vehicles & transport equipment	Other & combined confidential items	Total all commodity groups
	\$'000	\$'000	\$'000	\$'000	\$'000	\$'000	\$'000
1996-97	22 886	31 913	82 219	438 558	212 341	131 907	1 708 322
1997-98	34 755	21 222	76 463	557 126	280 251	169 261	2 136 171
1998-99	52 291	4 130	95 267	544 278	173 449	192 344	2 013 686
<b>1998</b>							
June	4 436	4	7 943	46 232	73 641	13 917	235 872
July	5 065	19	9 195	50 084	83	14 968	153 470
August	5 095	61	328	39 208	52	15 023	129 852
September	6 492	11	15 315	57 485	749	15 696	145 896
October	3 980	289	7 137	36 898	2	27 097	157 588
November	2 647	249	3 279	51 278	1 330	13 795	149 731
December	3 129	626	8 473	46 084	16	11 275	171 707
<b>1999</b>							
January	6 248	1 198	6 926	37 556	328	8 929	134 706
February	5 245	402	6 088	40 608	583	19 512	r 139 316
March	4 856	335	13 502	54 787	65 401	r 21 448	r 254 069
April	3 506	237	5 681	50 410	34 067	r 13 504	r 195 150
May	3 003	r 510	r 7 598	r 37 600	109	r 17 240	r 140 160
June	3 025	195	11 746	42 279	70 729	13 852	242 035

	NSW	Vic.	Qld	SA	WA	Tas.	Aust. <sup>1</sup>
<b>Population</b>							
Estimated resident population, December 1998 ('000) p	6 384.3	4 689.8	3 485.2	1 490.4	1 847.8	<b>471.1</b>	18 871.8
Proportion of Australian population, December 1998 (%) p	33.8	24.9	18.5	7.9	9.8	<b>2.5</b>	100.0
Population growth rate, 12 months to December 1998 (%) p	1.3	1.3	1.7	0.5	2.0	<b>-0.3</b>	1.3
<b>Labour Force</b>							
Employment growth, 12 months to July 1999 (trend series) (%)							
Males	3.0	1.5	2.7	2.9	0.9	<b>1.6</b>	2.2
Females	1.0	0.4	2.7	4.5	1.6	<b>-1.4</b>	1.4
Persons	2.1	1.0	2.7	3.6	1.2	<b>0.3</b>	1.8
Unemployment rate (trend series), July 1999 (%)	6.3	7.6	8.1	8.1	6.5	<b>9.4</b>	7.2
Unemployment growth, 12 months to July 1999 (trend series) (%)	-13.9	-7.0	-6.3	-18.8	-8.9	<b>-13.6</b>	-10.6
Participation rate (trend series), July 1999 (%)	61.7	63.0	64.9	60.1	65.8	<b>58.6</b>	63.0
Average weekly overtime worked per employee, May 1999 (hours)	1.1	1.1	1.0	0.8	1.1	<b>0.7</b>	1.1
Job vacancy rate, May 1999 (%)	1.2	0.9	0.8	0.7	1.0	<b>1.2</b>	1.0
Working days lost through industrial disputes, 12 months to April 1999 (days per '000 employees)	81	95	53	33	78	<b>16</b>	72
<b>Wages and Prices</b>							
Average weekly total earnings, full-time adult employees (trend series) May 1999 (\$)							
Males	901.50	831.80	795.50	797.60	864.90	<b>782.60</b>	850.50
Females	724.20	677.30	638.50	649.10	656.30	<b>627.30</b>	684.80
Persons	835.30	775.80	736.70	742.90	791.30	<b>729.80</b>	789.10
Average weekly total earnings, full-time adult employees, growth rate (trend series), 12 months to May 1999 (%)	5.4	1.2	0.7	3.1	1.3	<b>1.0</b>	2.6
Consumer price index, all groups, annual growth to June quarter 1999 (%) <sup>2</sup>	1.3	1.0	0.7	1.0	1.6	<b>0.4</b>	1.1
<b>Building</b>							
% change in the number of new residential dwelling units approved in the 12 months ended June 1999, over the same period previous year	-1.9	9.0	-20.2	9.9	11.1	<b>-14.2</b>	-1.3
<b>Private Investment and Retail Trade</b>							
% change in private new capital expenditure, 12 months ended March 1999, over the same period previous year (original)	3.6	2.1	1.8	-17.3	-2.7	<b>-26.4</b>	2.4
% change in <i>trend</i> estimates turnover of retail establishments, June 1999 (change from corresponding month of the previous year)	6.8	12.0	6.6	1.5	4.7	<b>5.0</b>	7.3
<b>Transport</b>							
% change in number of new motor vehicles (excluding motorcycles) registered in the 12 months ended June 1999, over the same period previous year	5.5	7.3	0.8	0.5	-2.6	<b>-5.2</b>	3.2
<b>Agriculture<sup>1</sup></b>							
% change in the number of livestock slaughtered 12 months ended June 1999 over the same period previous year							
Cattle and calves	-12.2	-3.2	8.0	-24.6	-4.8	<b>-0.1</b>	-2.7
Sheep and lambs	-1.0	1.4	0.1	-8.8	-16.3	<b>-0.1</b>	-3.5
<b>Tourism: Room occupancy rates</b>							
Hotels, motels & guest houses, & serviced apartments with facilities, March quarter 1999 (%)	60.6	62.0	54.9	58.0	55.8	<b>66.1</b>	58.1
<b>Australian National and State Accounts</b>							
% change in Domestic (State) Final Demand, <sup>3</sup> Chain Volume measures Trend Series							
Dec. qtr 1998 to Mar. qtr 1999	1.5	0.7	1.9	0.2	-1.4	<b>0.8</b>	1.2
Mar. qtr 1998 to Mar. qtr 1999	4.3	5.1	7.5	0.4	-3.4	<b>—</b>	4.8

<sup>1</sup> Australian totals include the ACT and NT, with the exception of Agriculture, which excludes both. <sup>2</sup> CPI applies to State capitals.

<sup>3</sup> Total of four types of expenditure: Private investment, Private consumption, Government investment, Government consumption.

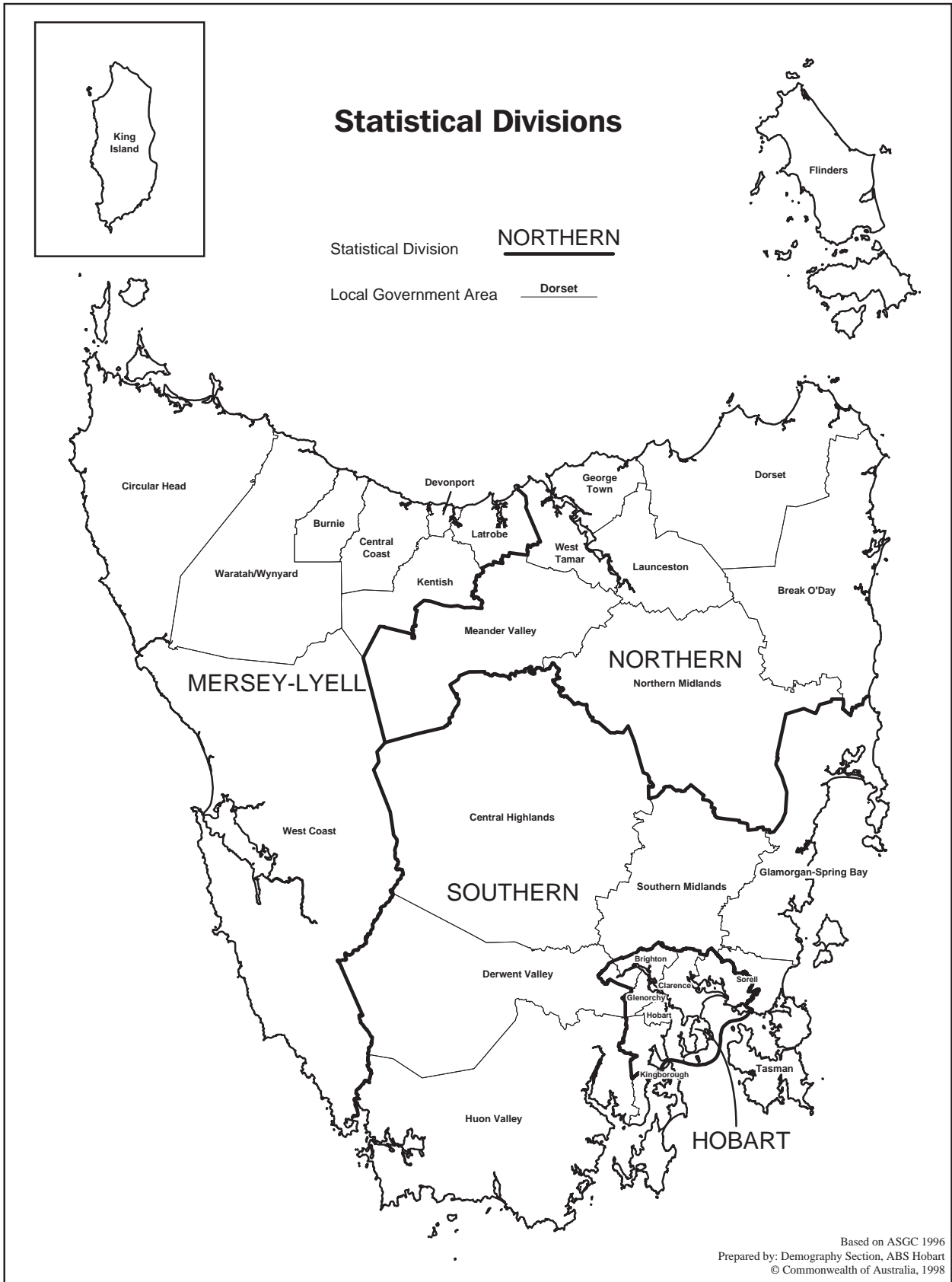
Particulars	Unit	Greater Hobart and Southern Statistical Division	Northern Statistical Division	Mersey-Lyell Statistical Division	Tasmania
<b>Area</b> , 30 June 1996	km <sup>2</sup>	25 521	19 935	22 507	67 964
<b>Population</b>					
Estimated resident population, 30 June 1996	no.	230 187	134 047	110 209	474 443
Estimated resident population, 30 June 1998 p	no.	229 593	133 229	109 063	471 885
Births 1997 <sup>1</sup>	no.	2 575	1 735	1 518	6 007
Deaths 1997 <sup>1</sup>	no.	1 837	1 098	866	3 809
<b>Labour Force</b> (original), July 1999					
Total employed.	no.	96 500	57 600	41 300	195 500
Total unemployed	no.	8 200	5 500	5 000	18 700
Unemployment rate	%	7.8	8.7	10.8	8.7
Participation rate	%	57.7	59.1	56.6	57.9
<b>Schools, 1997<sup>2</sup></b>					
Government	no.	102	60	60	222
Non-government	no.	35	16	16	67
<b>Full-time school students, 1997<sup>2</sup></b>					
Government	no.	29 355	17 913	15 653	62 921
Non-government	no.	12 128	4 909	4 199	21 236
<b>Educational qualification, 1996 Census<sup>3</sup></b>					
Bachelor degree or higher <sup>4</sup>	no.	17 058	7 152	3 908	28 184
Undergraduate diploma	no.	5 893	3 268	2 181	11 374
Associate diploma	no.	3 775	1 902	1 466	7 184
Skilled vocational	no.	16 255	0 040	8 841	35 238
Basic vocational	no.	4 548	2 632	2 305	9 515
<b>Agriculture</b>					
Establishments with agricultural activity, 1997–98 season	no.	1 138	1 584	1 761	4 483
Total area of establishments	ha	751 167	837 147	326 171	1 914 485
Crops, production, 1997–98 season					
Potatoes	tonnes	2 785	119 771	251 022	373 578
Onions	tonnes	777	9 613	41 555	51 945
Apples	tonnes	36 097	4 427	6 168	46 693
Barley	tonnes	6 793	21 527	2 597	30 917
Livestock, 1997–98 season					
Beef cattle	no.	83 229	213 631	213 562	510 422
Dairy cattle	no.	7 845	79 693	130 180	217 718
Sheep and lambs	no.	1 768 448	1 926 966	173 454	3 868 868
Pigs	no.	3 235	14 899	6 165	24 299
Gross value of agric. production, 1997–98p	\$m	n.y.a.	n.y.a.	n.y.a.	717
<b>Business locations, September 1998</b>					
Locations with manufacturing activity					
Less than 20 employees	no.	424	327	257	1 008
20 or more employees	no.	83	67	48	198
Total	no.	507	394	305	1 206
Locations with retail activity					
Less than 20 employees	no.	2 046	1 346	1 133	4 525
20 or more employees	no.	82	43	35	160
Total	no.	2 128	1 389	1 168	4 685
<b>Building, 1997–98</b>					
New dwelling units approved	no.	851	471	316	1 638
Value of total residential building approved	\$'000	96 910	49 006	34 882	180 798
Value of total building approved	\$'000	154 801	96 463	55 001	306 264
<b>Dwellings, Census 1996<sup>3</sup></b>					
Total dwellings	no.	98 815	57 467	45 529	201 820
Occupied private dwellings	no.	85 255	49 759	40 183	175 197
Fully owned	no.	34 338	21 563	18 359	74 260

<sup>1</sup> Births and deaths are based on usual residence year of registration.  
Total Tasmania includes usual residences other than Tasmanian Statistical Divisions.

<sup>2</sup> Source: DETYA and Tasmanian Department of Education.

<sup>3</sup> Total includes migratory statistical division.

<sup>4</sup> Includes higher degree, postgraduate diploma and bachelor degree.



## SELF-HELP ACCESS TO STATISTICS

- CPI INFOLINE* For current and historical Consumer Price Index data, call 1902 981 074 (call cost 75c per minute).
- DIAL-A-STATISTIC* For the latest figures for National Accounts, Balance of Payments, Labour Force, Average Weekly Earnings, Estimated Resident Population and the Consumer Price Index call 1900 986 400 (call cost 75c per minute).
- INTERNET* [www.abs.gov.au](http://www.abs.gov.au)
- LIBRARY* A range of ABS publications is available from public and tertiary libraries Australia-wide. Contact your nearest library to determine whether it has the ABS statistics you require.

## WHY NOT SUBSCRIBE?

- PHONE* +61 1300 366 323
- FAX* +61 03 9615 7848

## CONSULTANCY SERVICES

ABS offers consultancy services on a user pays basis to help you access published and unpublished data. Data that is already published and can be provided within 5 minutes is free of charge. Statistical methodological services are also available. Please contact:

<i>INQUIRIES</i>	<i>City</i>	<i>By phone</i>	<i>By fax</i>
	Canberra	02 6252 6627	02 6207 0282
	Sydney	02 9268 4611	02 9268 4668
	Melbourne	03 9615 7755	03 9615 7798
	Brisbane	07 3222 6351	07 3222 6283
	Perth	08 9360 5140	08 9360 5955
	Adelaide	08 8237 7400	08 8237 7566
	Hobart	03 6222 5800	03 6222 5995
	Darwin	08 8943 2111	08 8981 1218

*POST* Client Services, ABS, PO Box 10, Belconnen ACT 2616

*EMAIL* [client.services@abs.gov.au](mailto:client.services@abs.gov.au)



2130360009998  
ISSN 1034-1803

RRP \$18.00